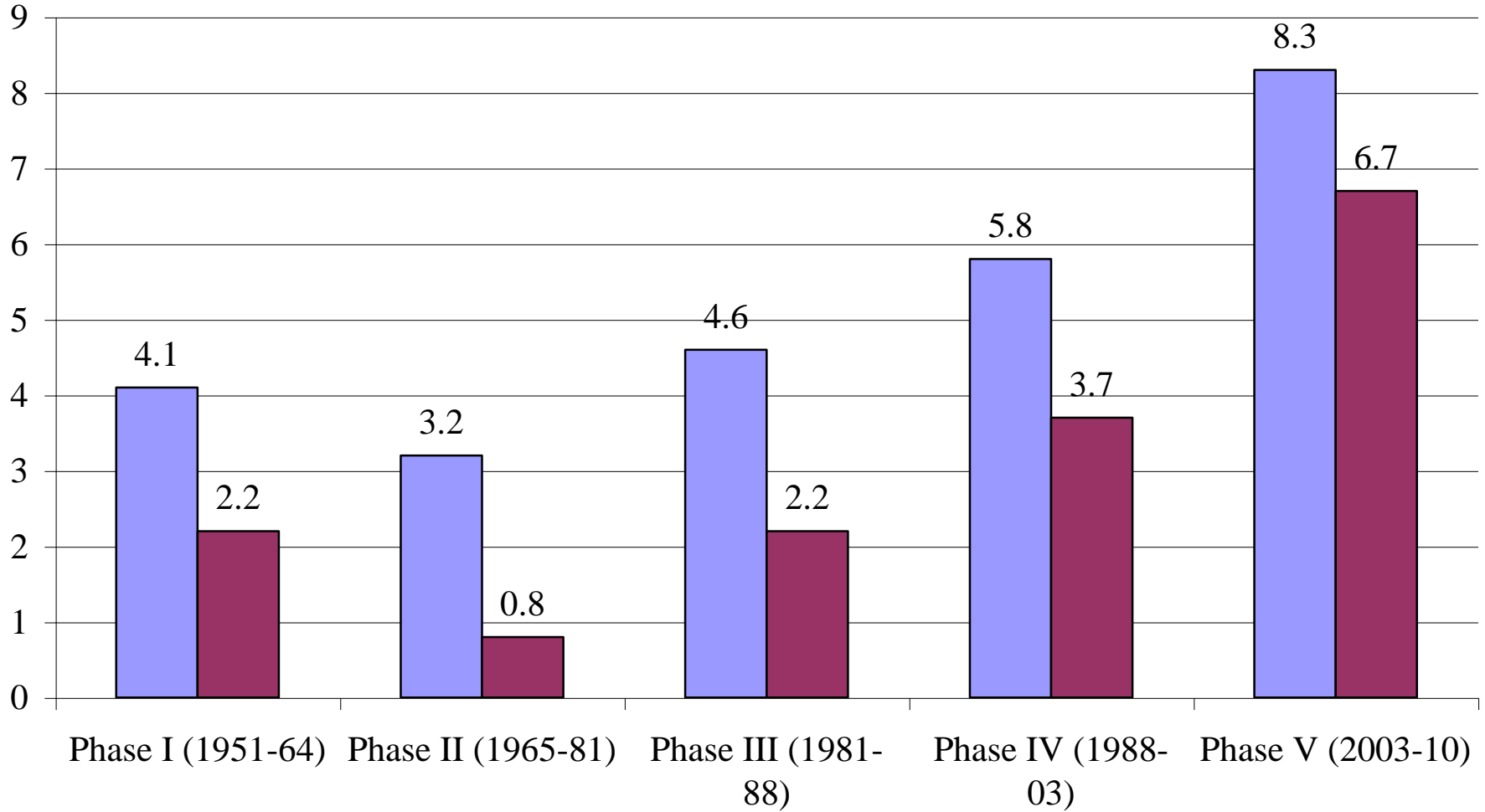


Indian Economy in Graphs

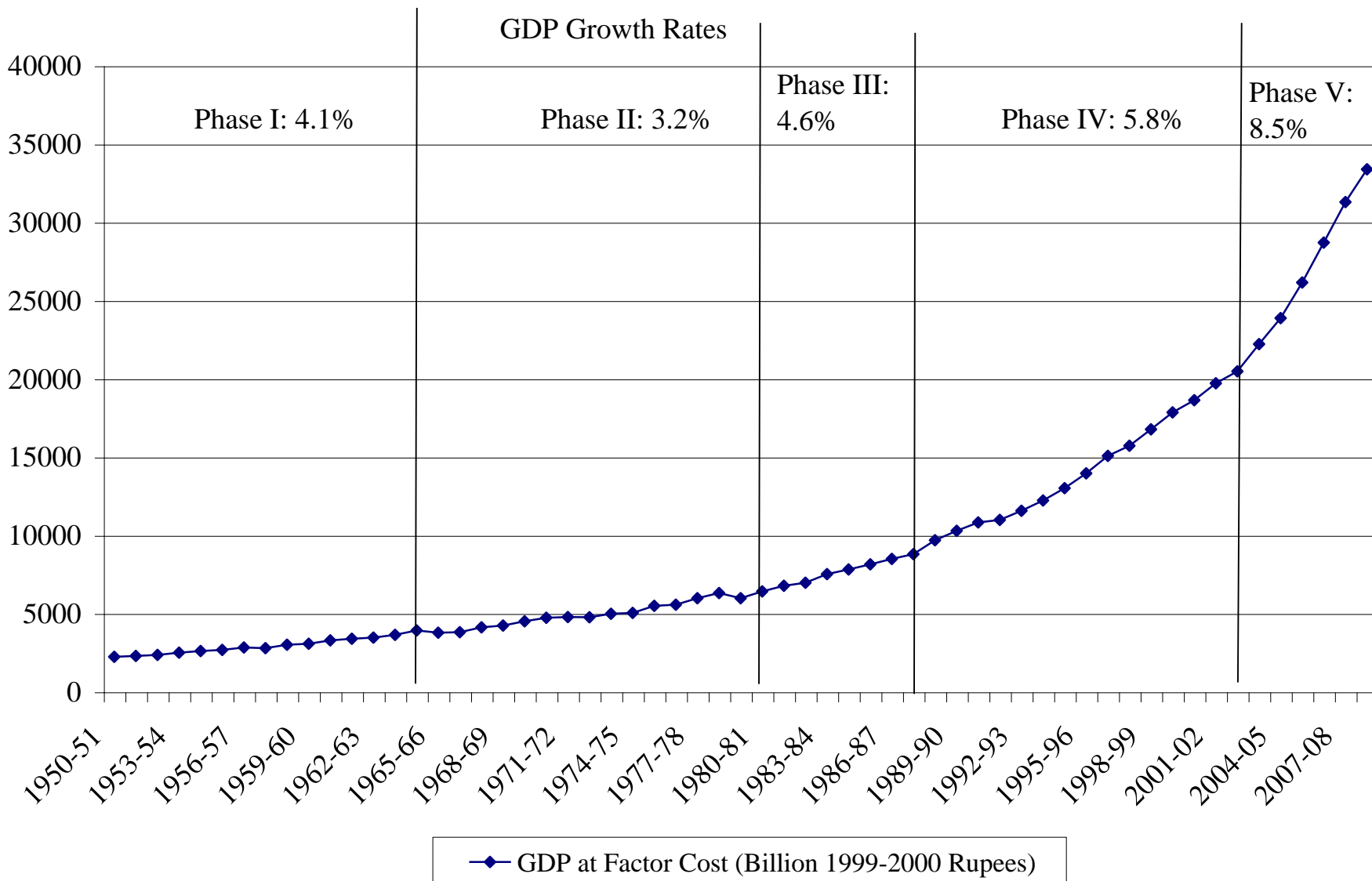
Arvind Panagariya
Columbia University

Growth in GDP and Per-capita GDP

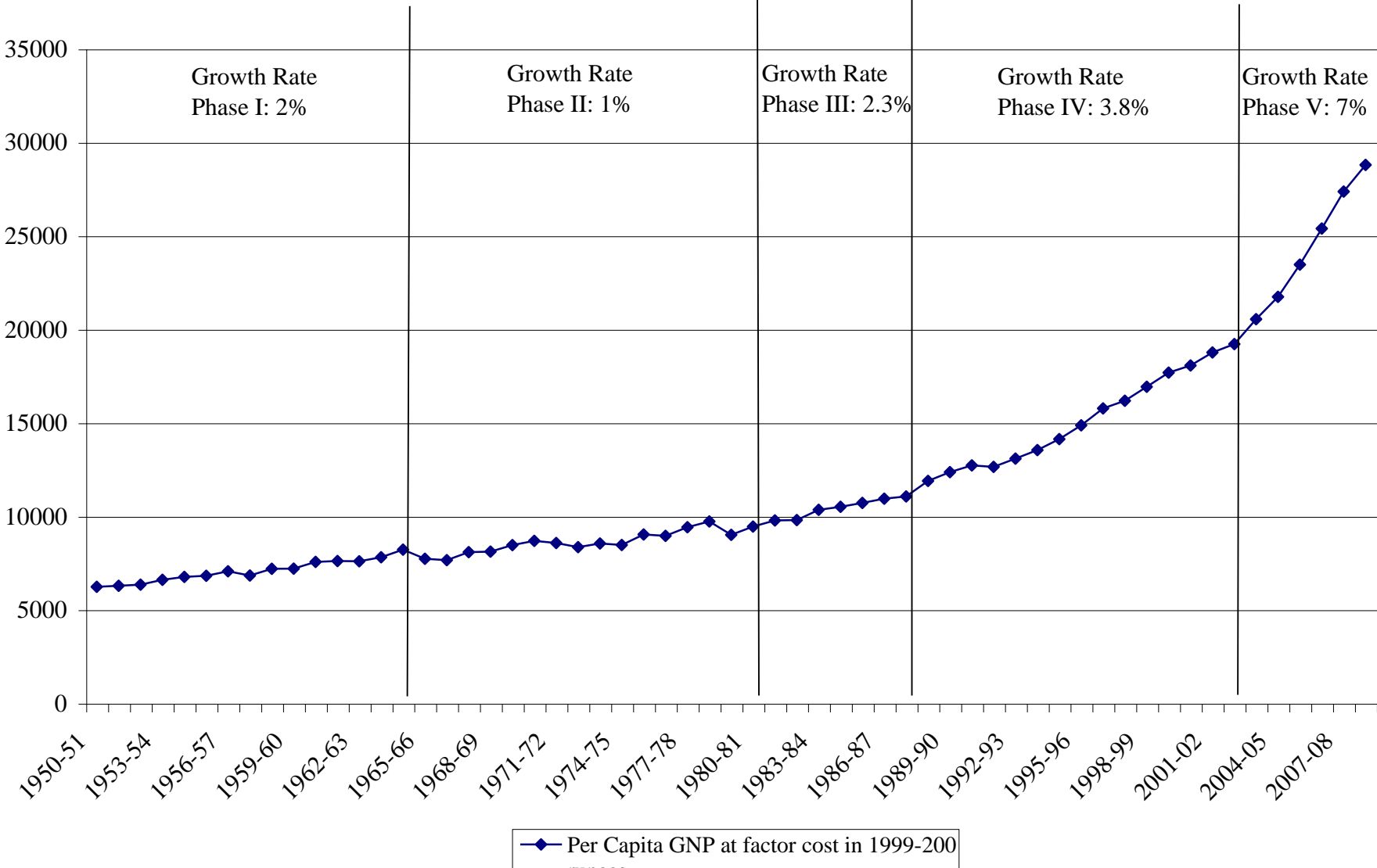


■ Growth rate of GDP at factor cost ■ Growth rate of per-capita NNP at factor cost

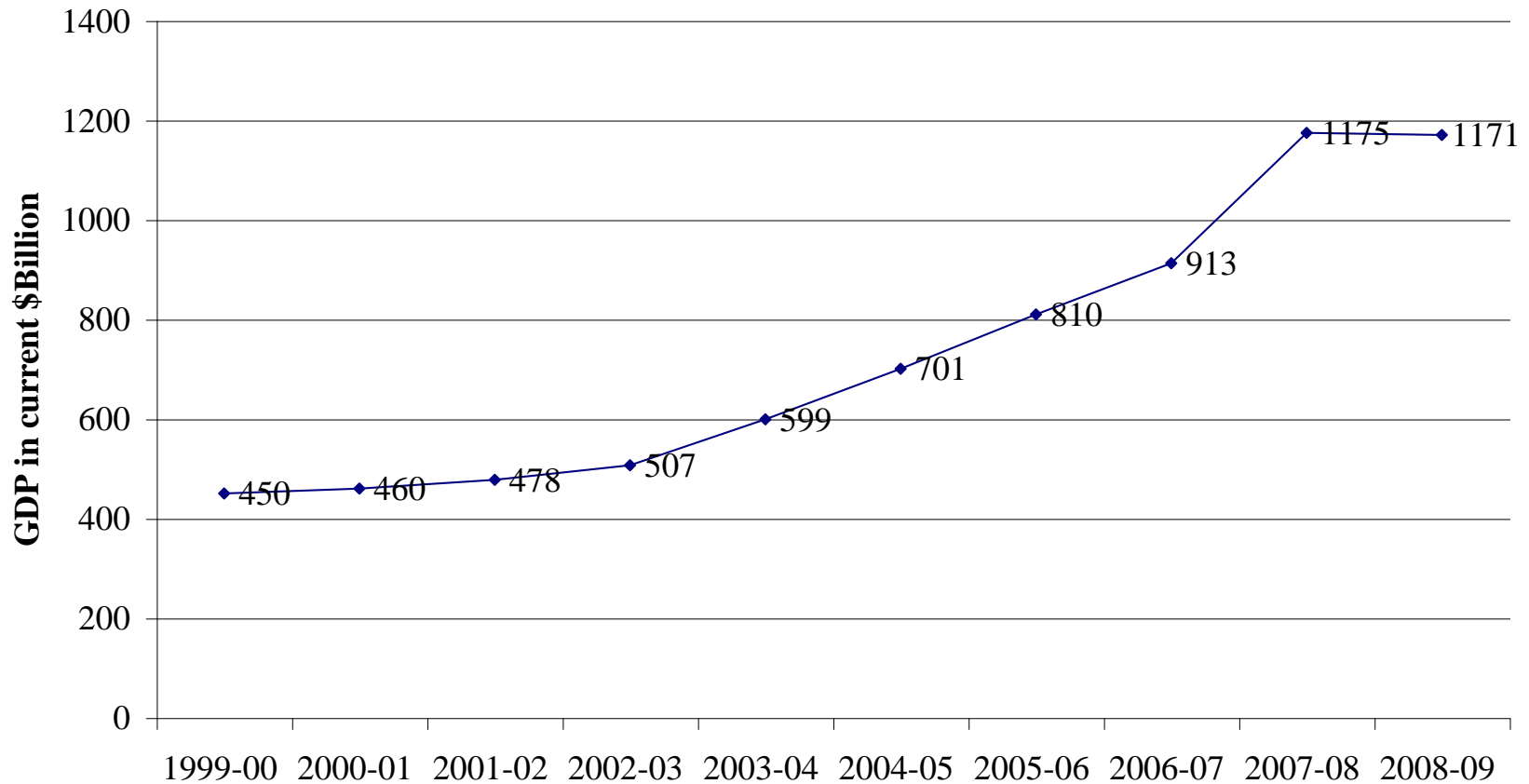
GDP at Factor Cost (Billion 1999-2000 Rupees)

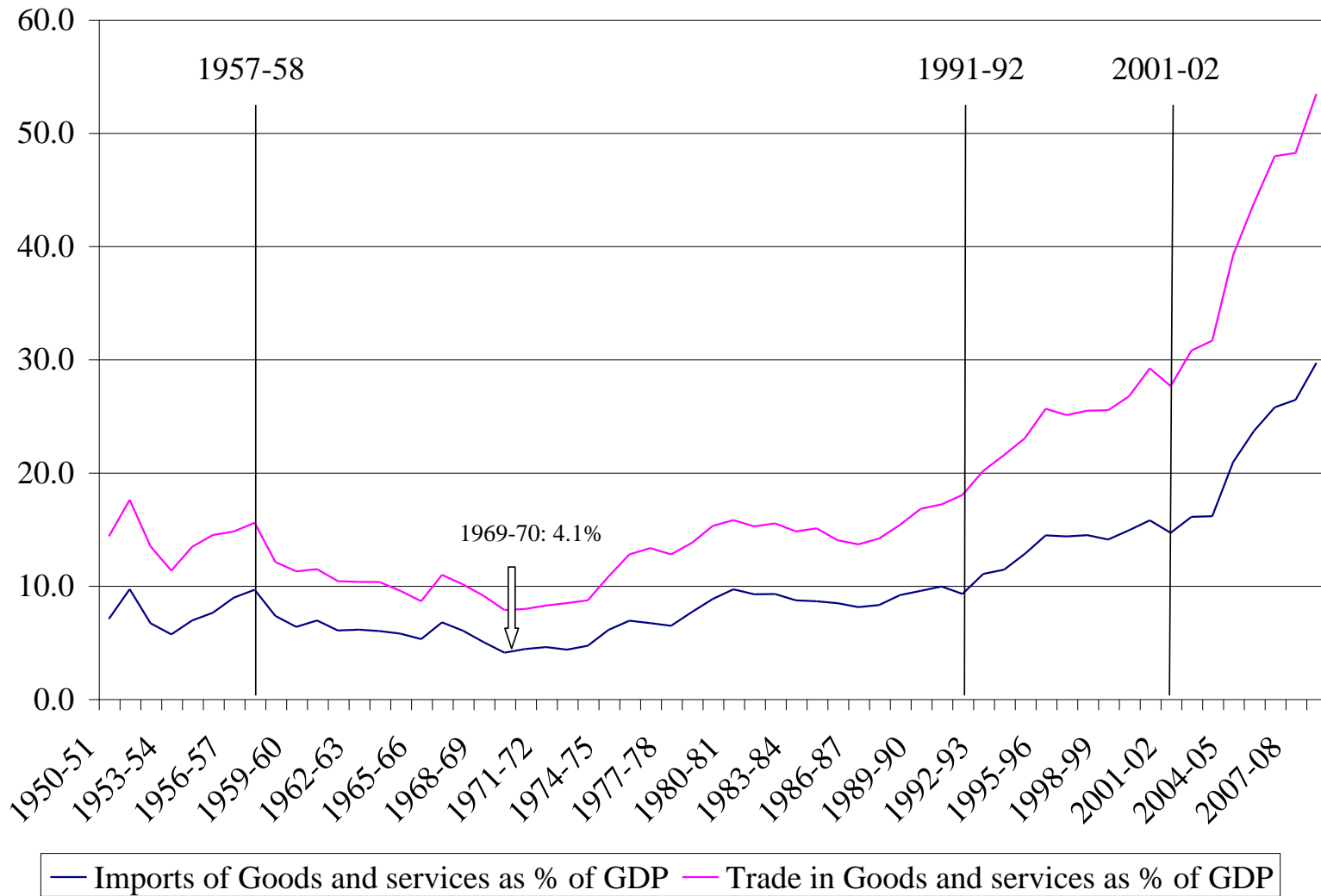


Per Capita GNP at factor cost in 1999-200 rupees



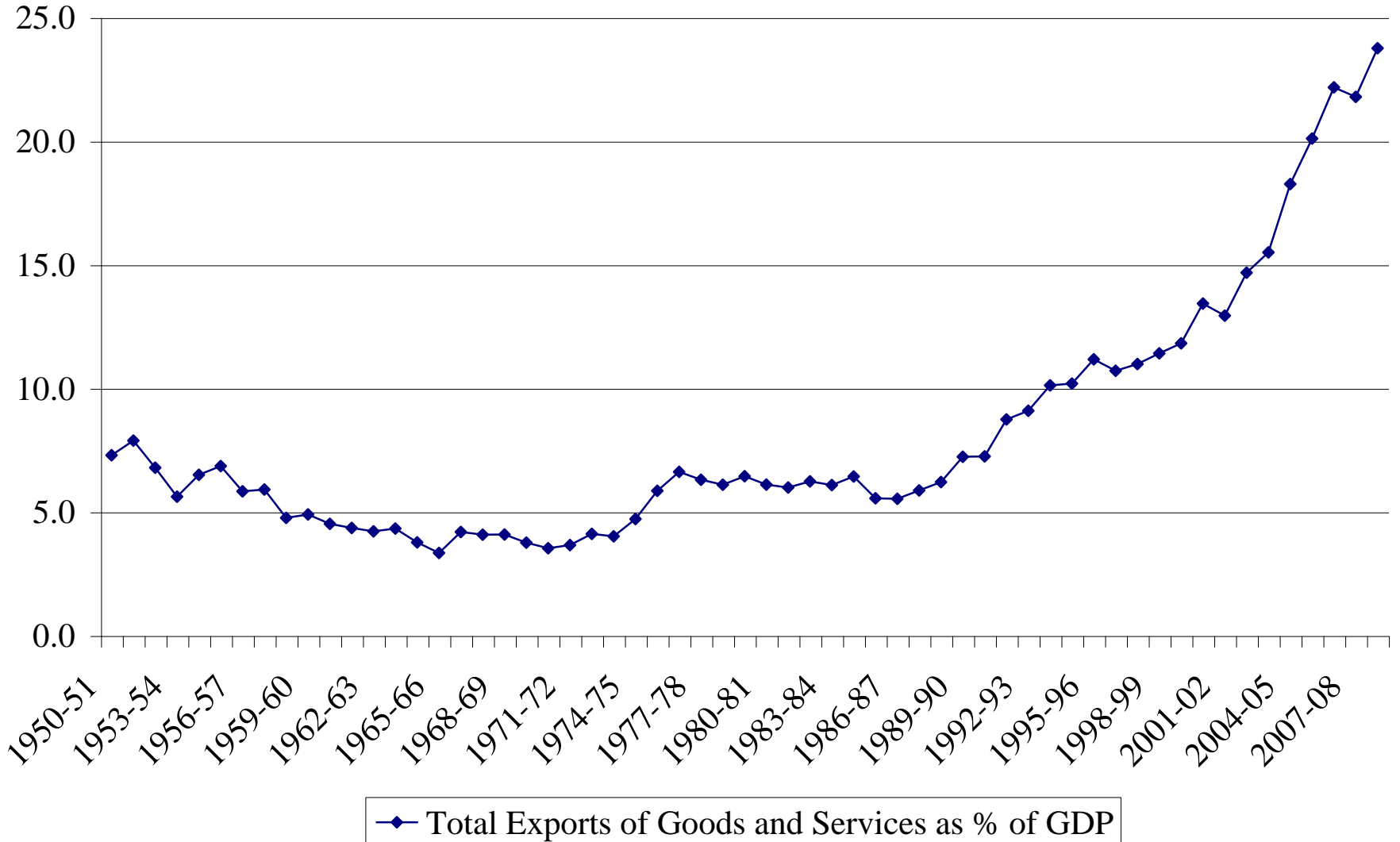
GDP in current dollars has grown 15.3% annually during 2003-09





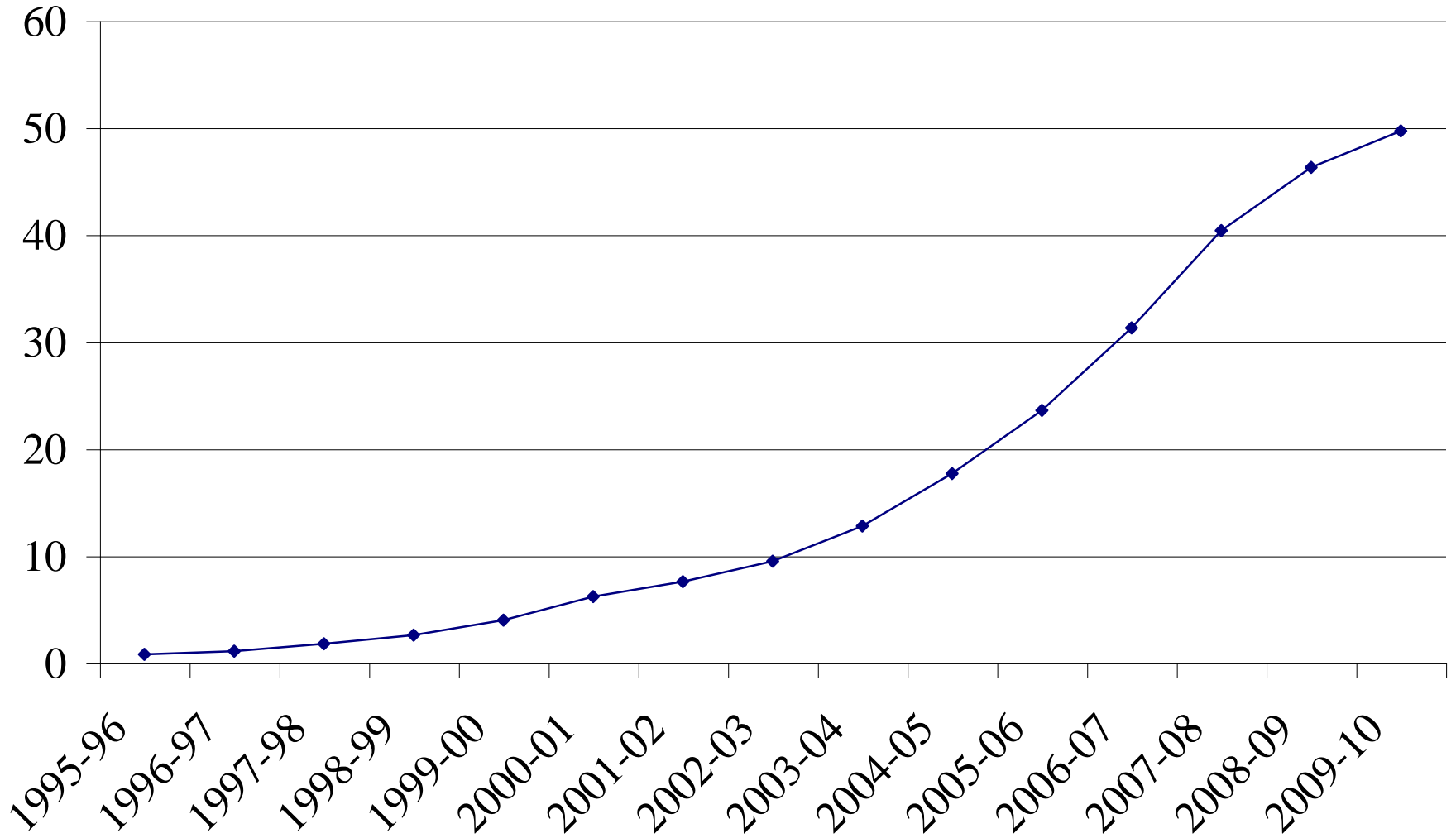
Imports and Total Trade in Good and Services: 1950-2009

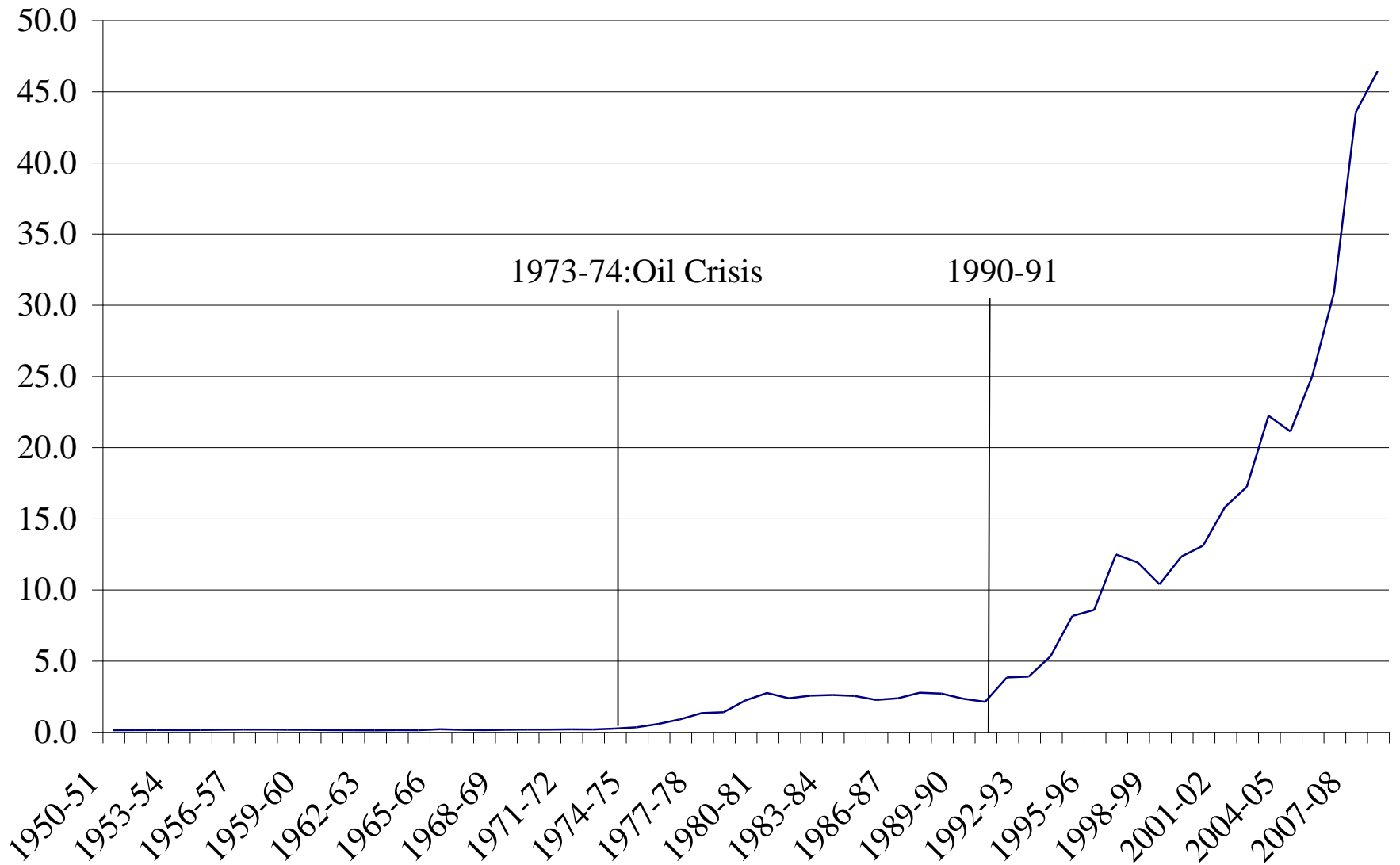
Total Exports of Goods and Services as % of GDP



Arvind Panagariya
Columbia University

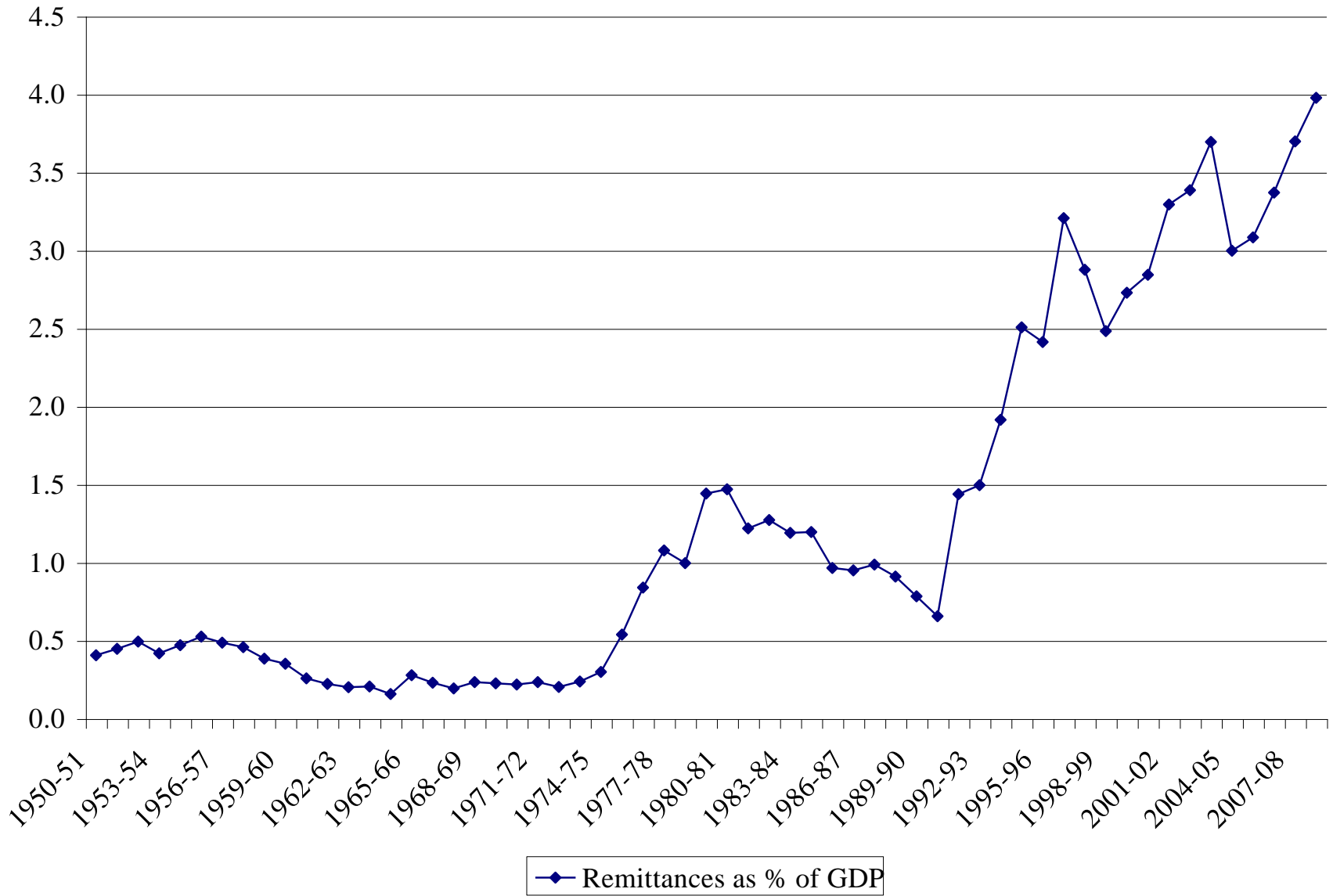
Total Software Exports (\$Billion)



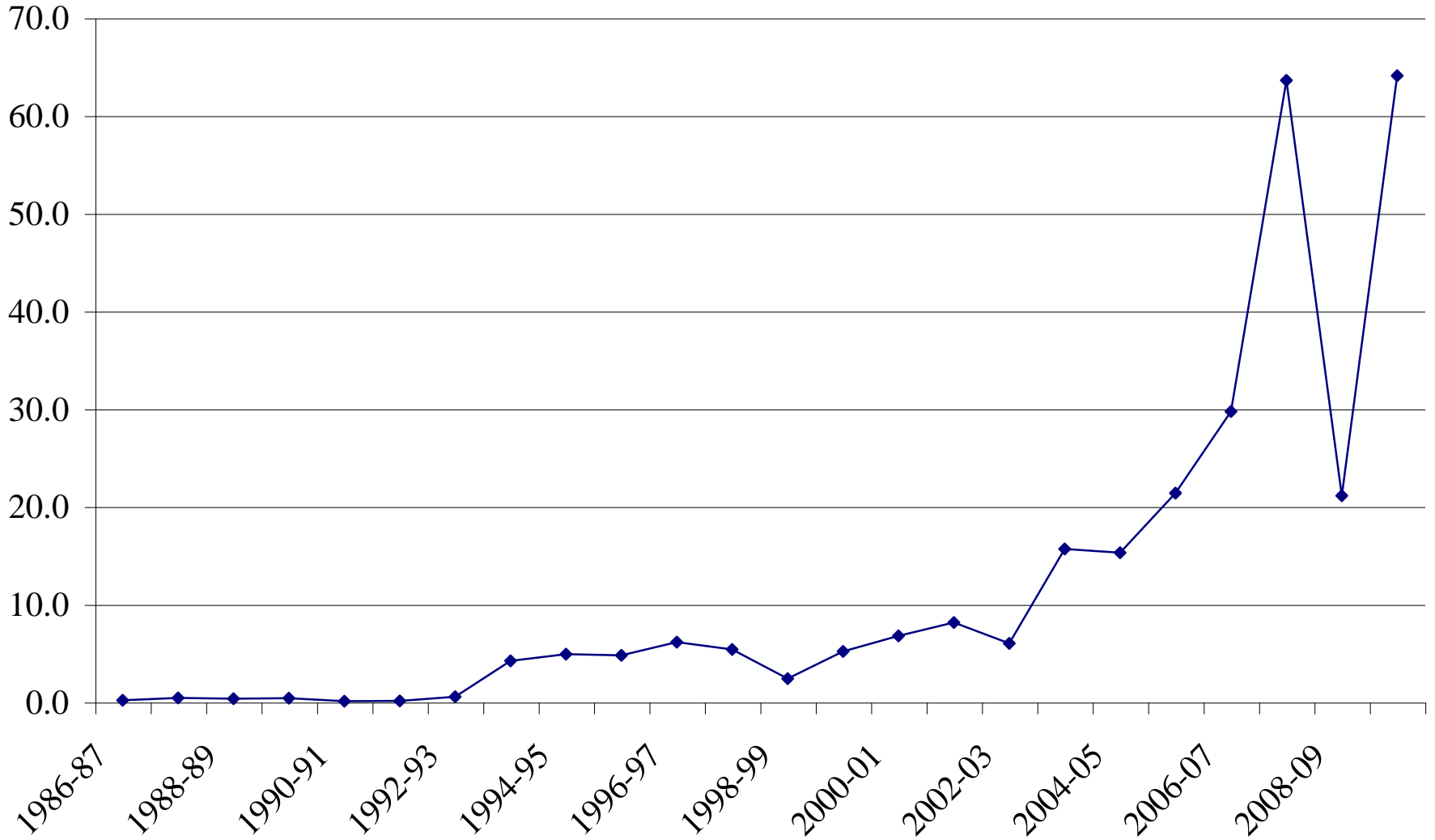


— Remittances (\$Billion)

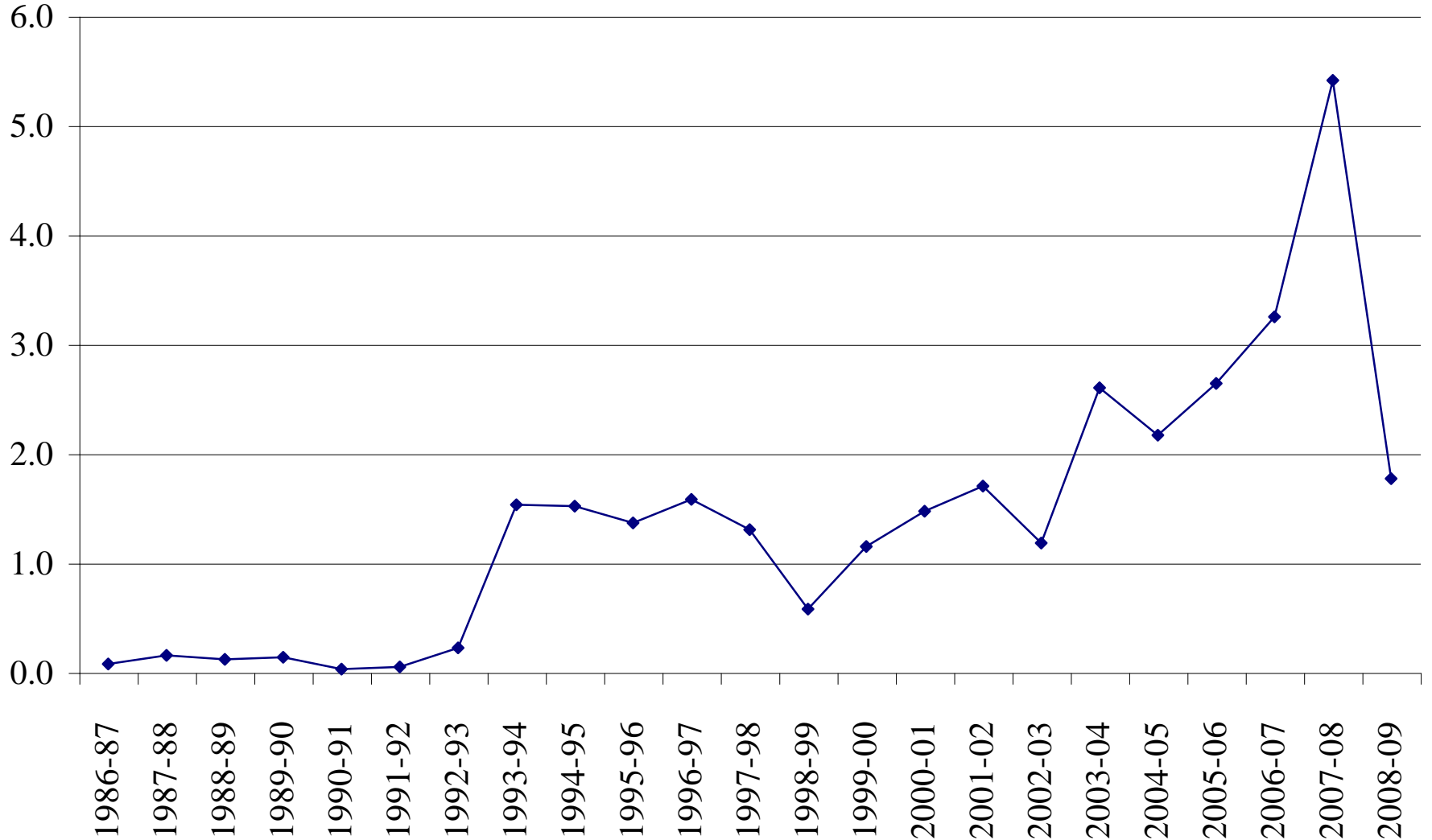
Arvind Panagariya
Columbia University



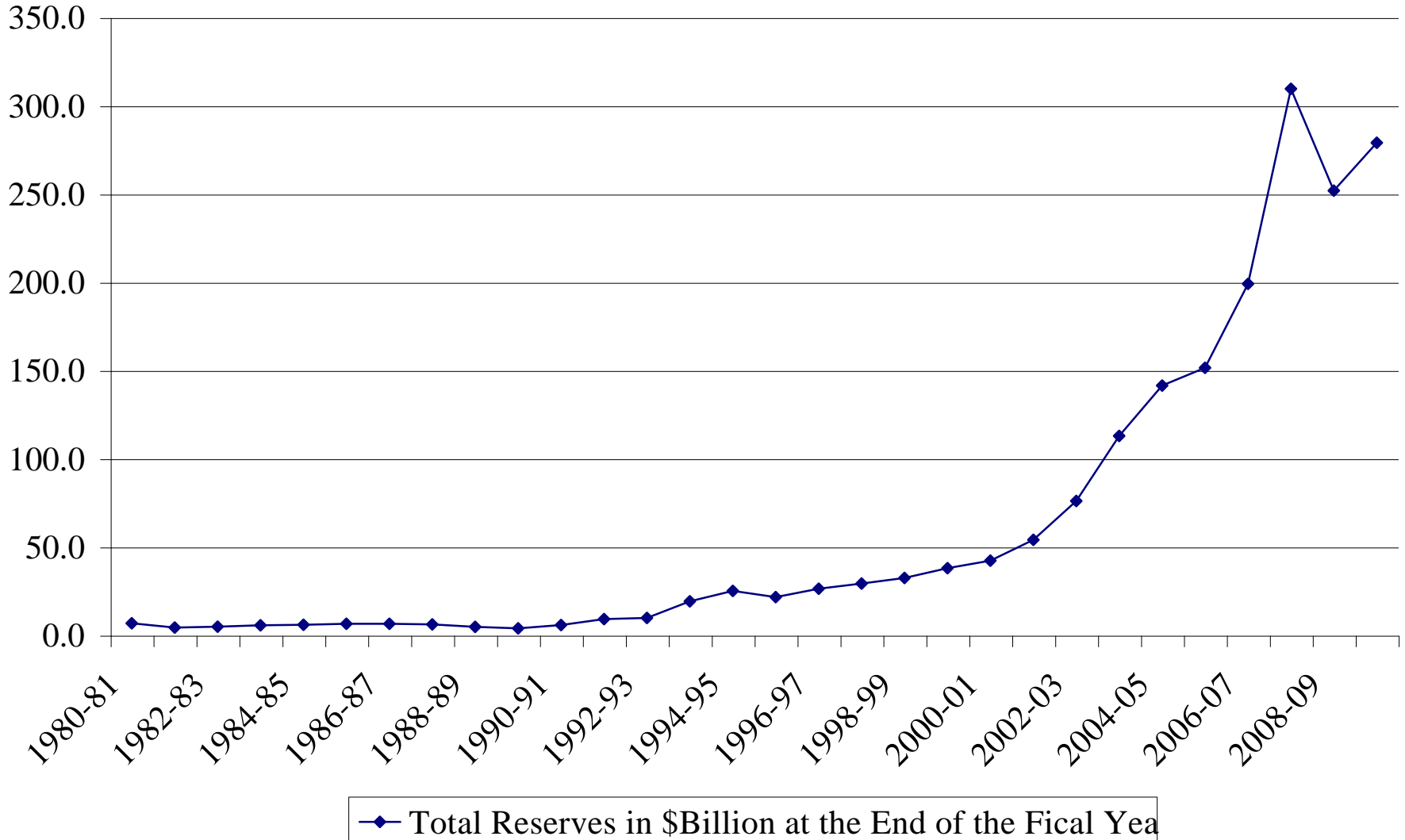
Foreign Investment in Billion Dollars



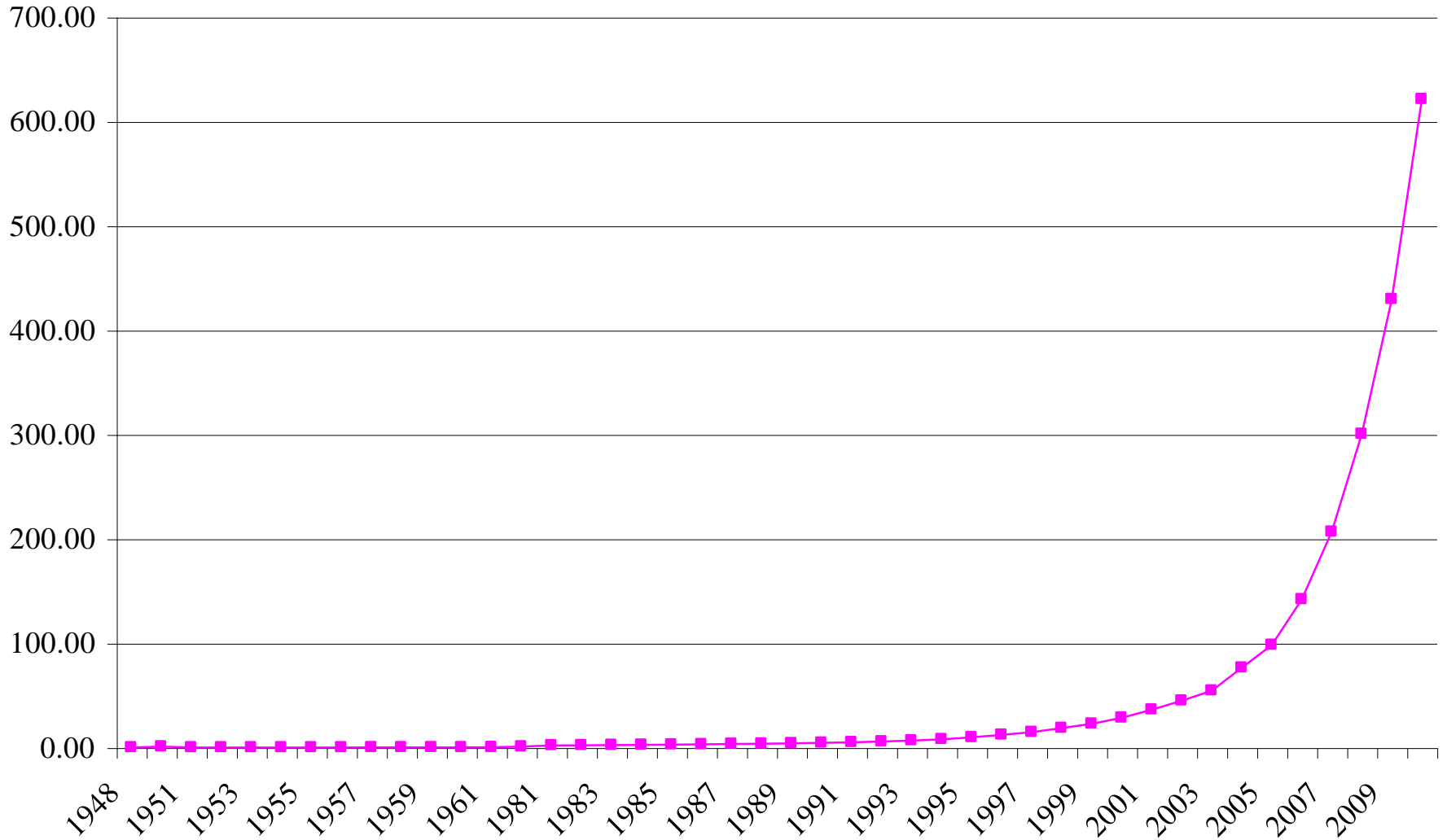
Foreign Investment as % of the GDI



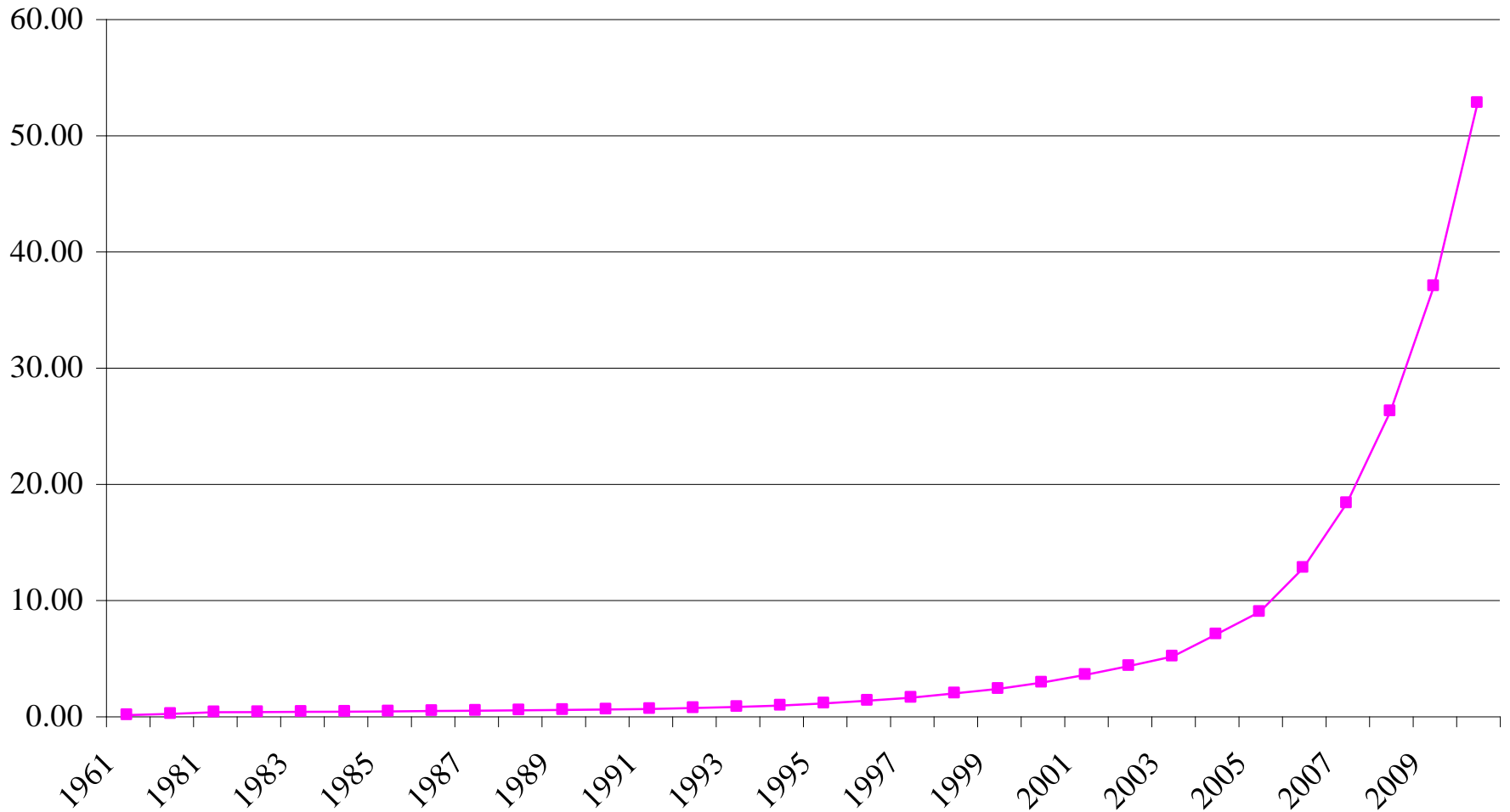
Total Reserves in \$Billion at the End of the Fical Yea



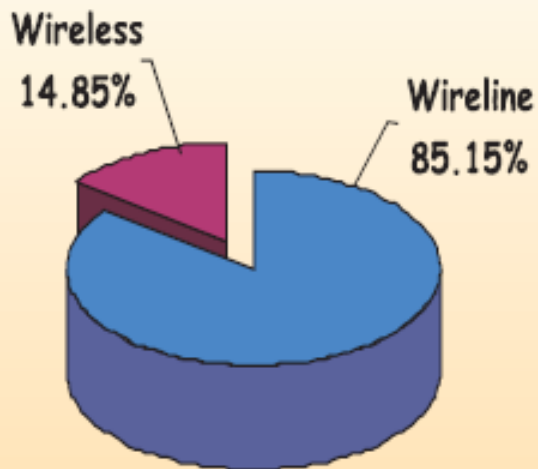
Million Phones as of March 31 of the Year Show



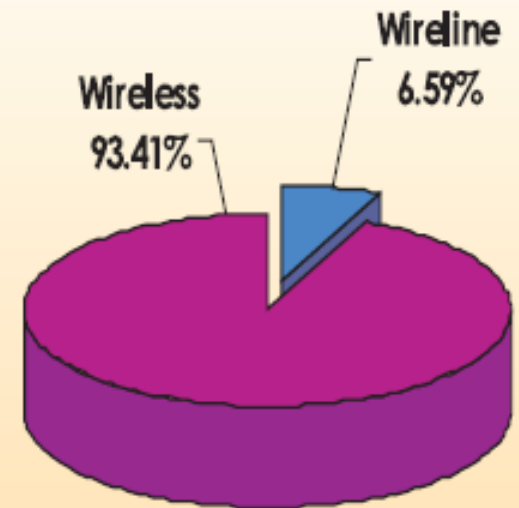
Teledensity: Telephones Per 100 Population
Urban Teledensity as of March 31 2010: 119.4
Rural Teledensity as of March 31 2010: 24.2



%age share of Wireline and Wireless phones in
March 2002



%age share of Wireline and Wireless phones in
December 2009



Fixed line phones are now declining in absolute terms

Figure - 1
GROWTH OF TELECOM NETWORK [PSUs & PRIVATE] (In lakh)

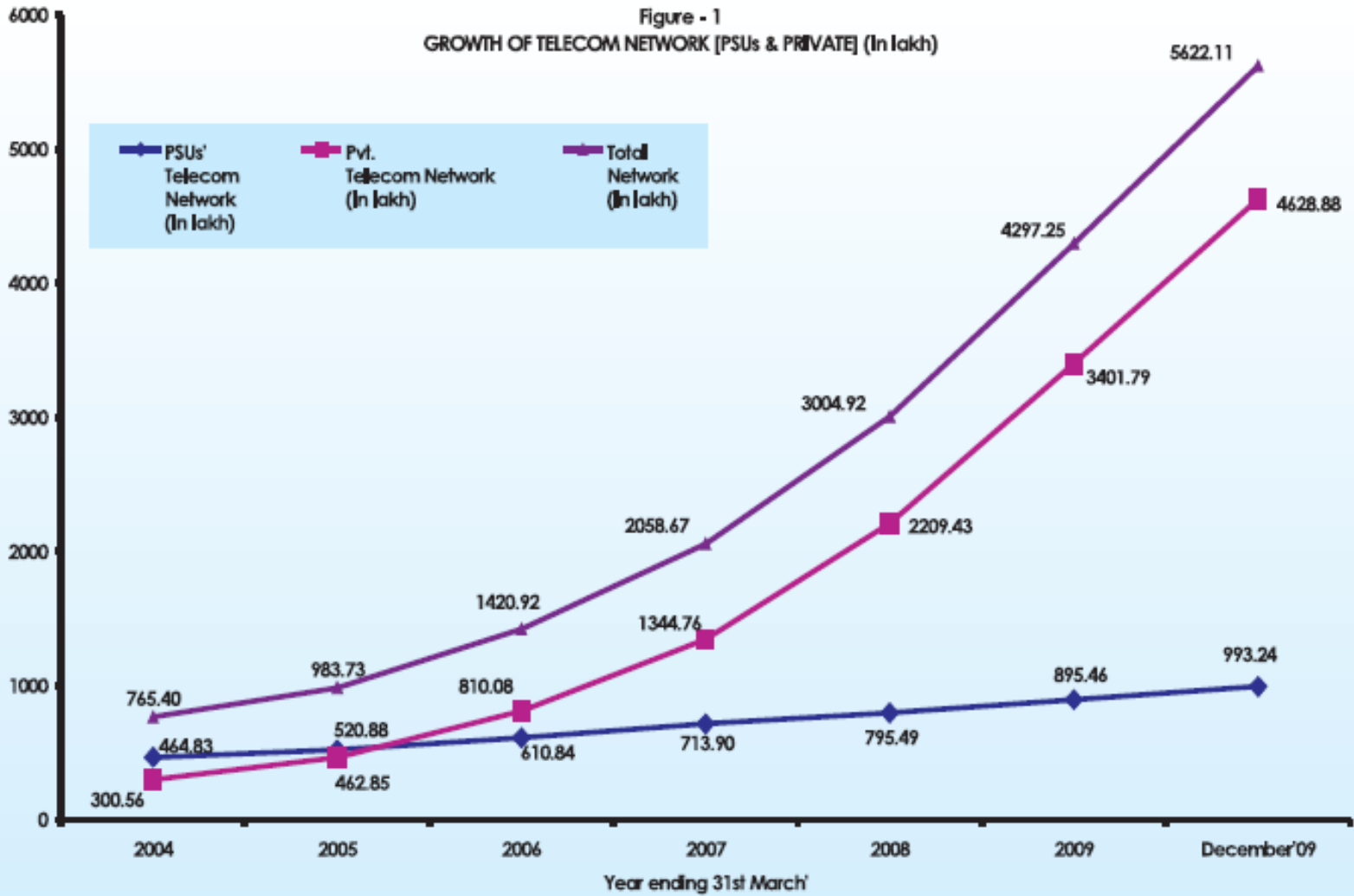
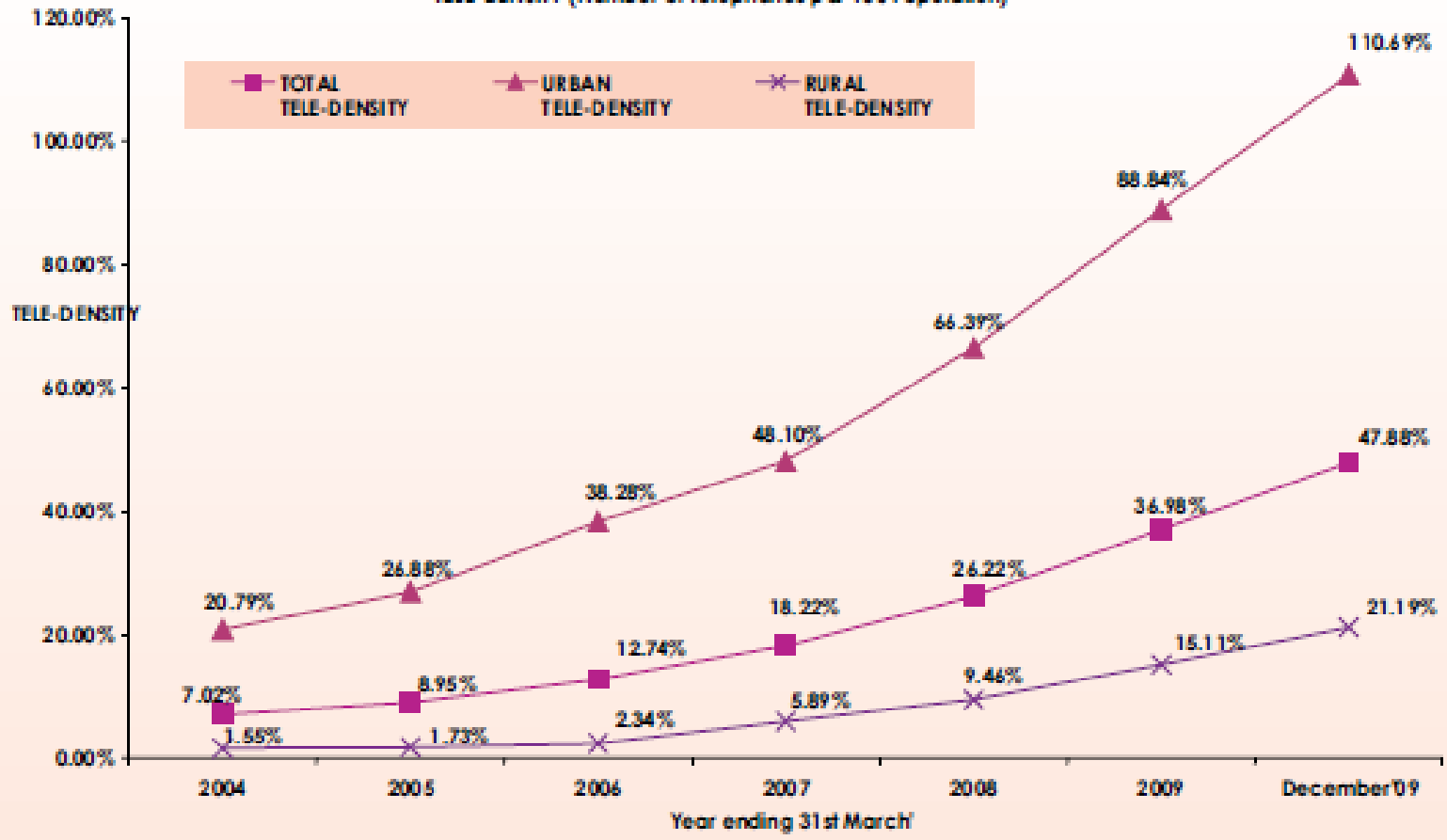
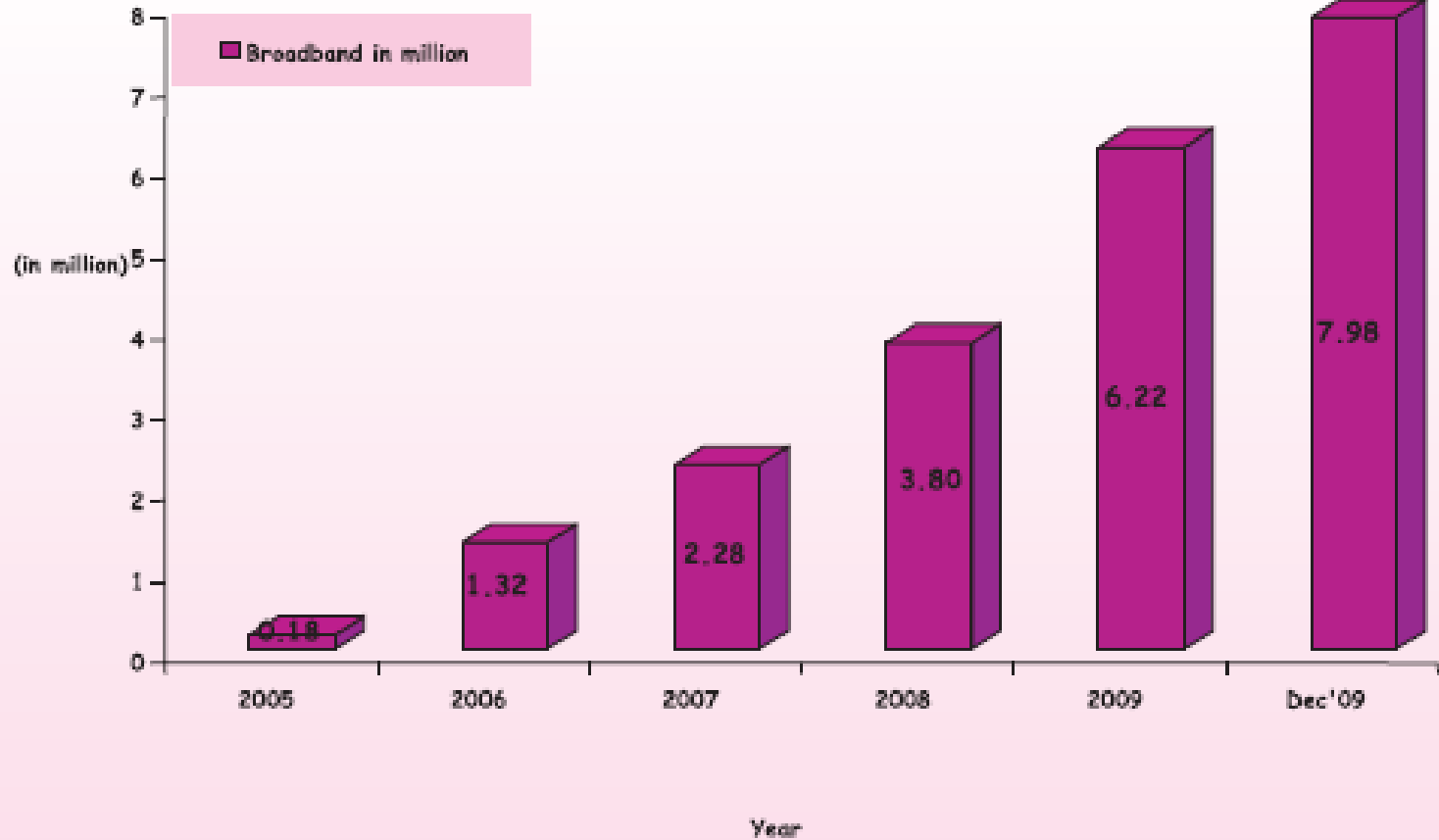


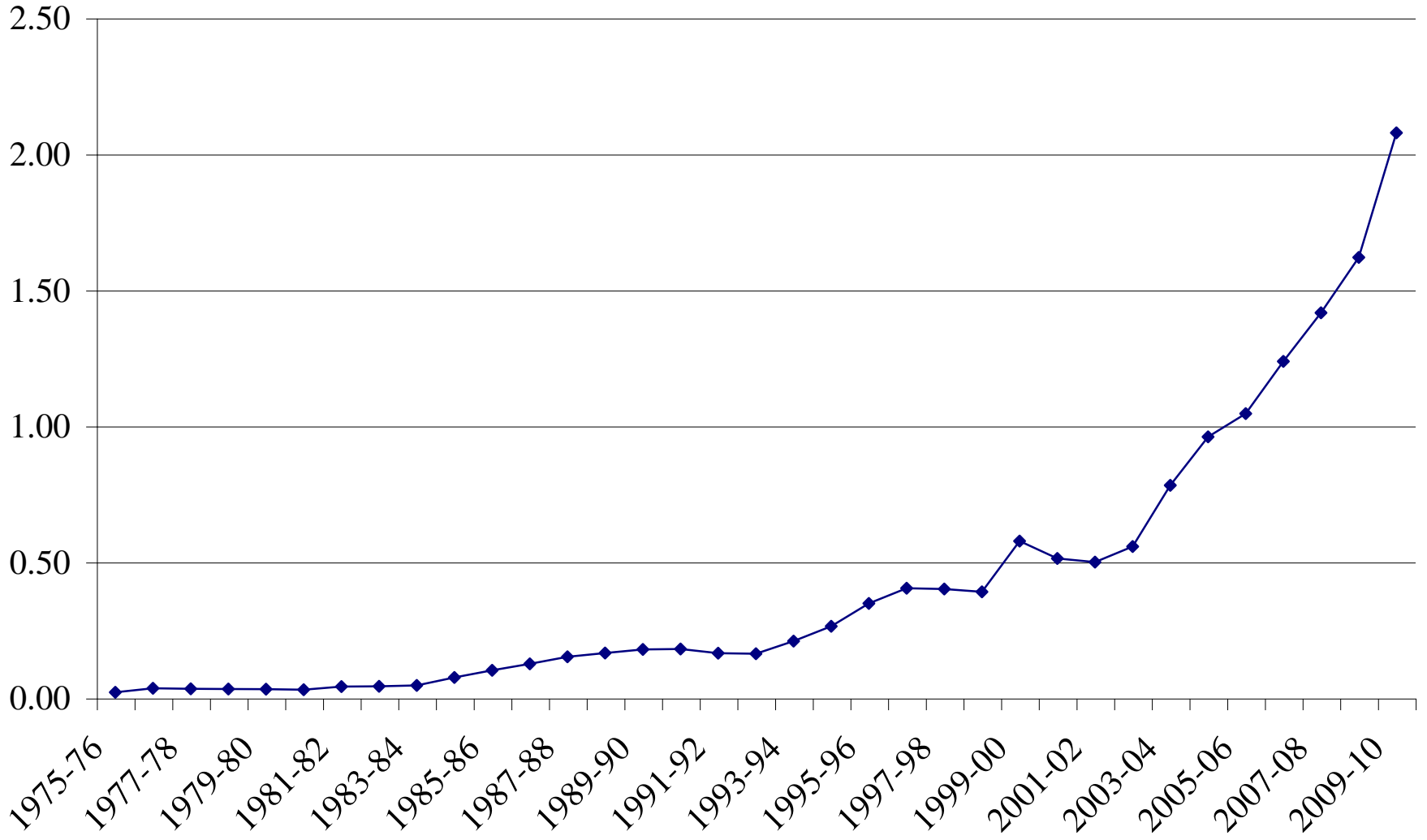
FIGURE - 2
TELE-DENSITY (Number of Telephones per 100 Population)



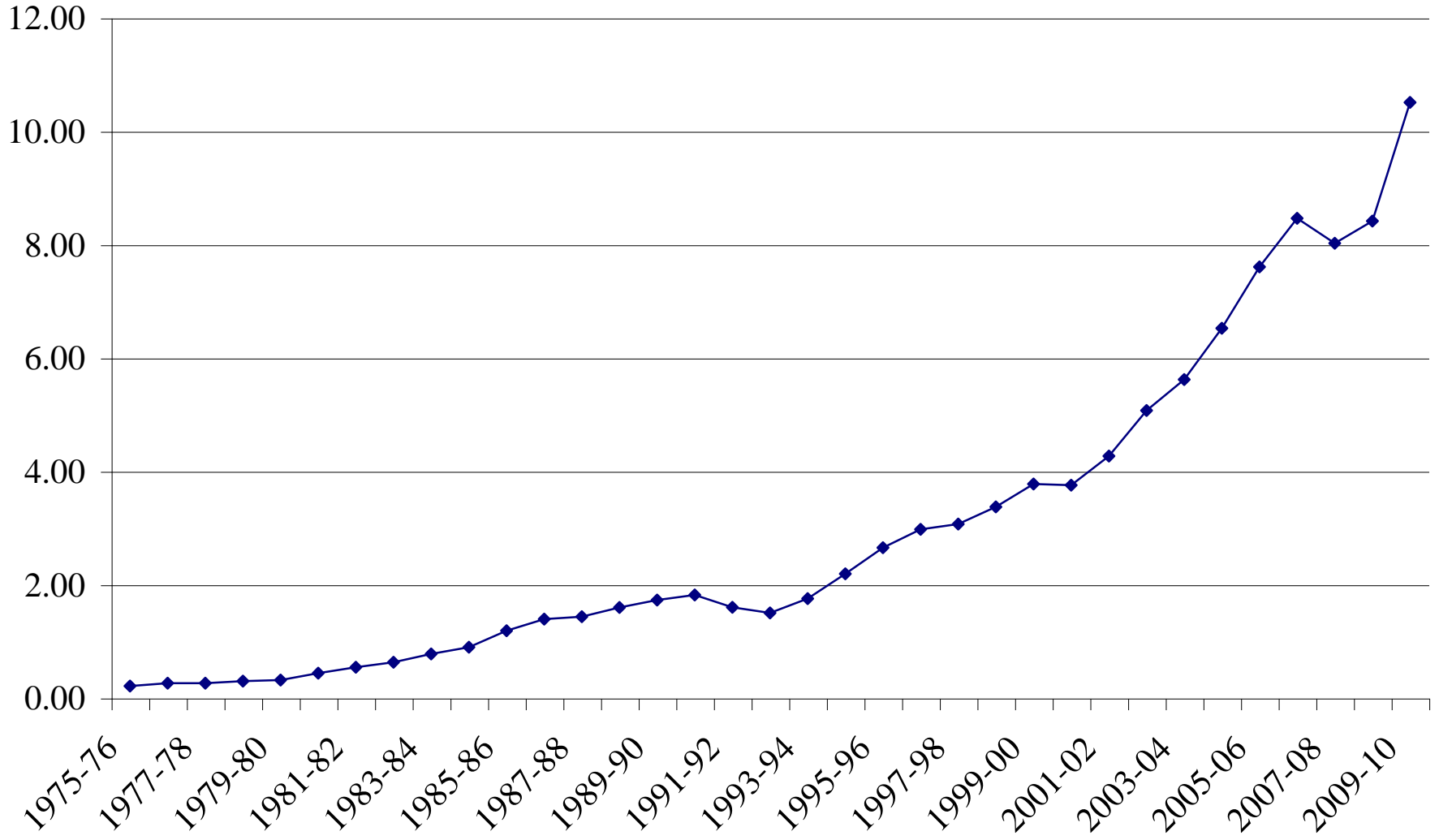
Broadband Subscribers



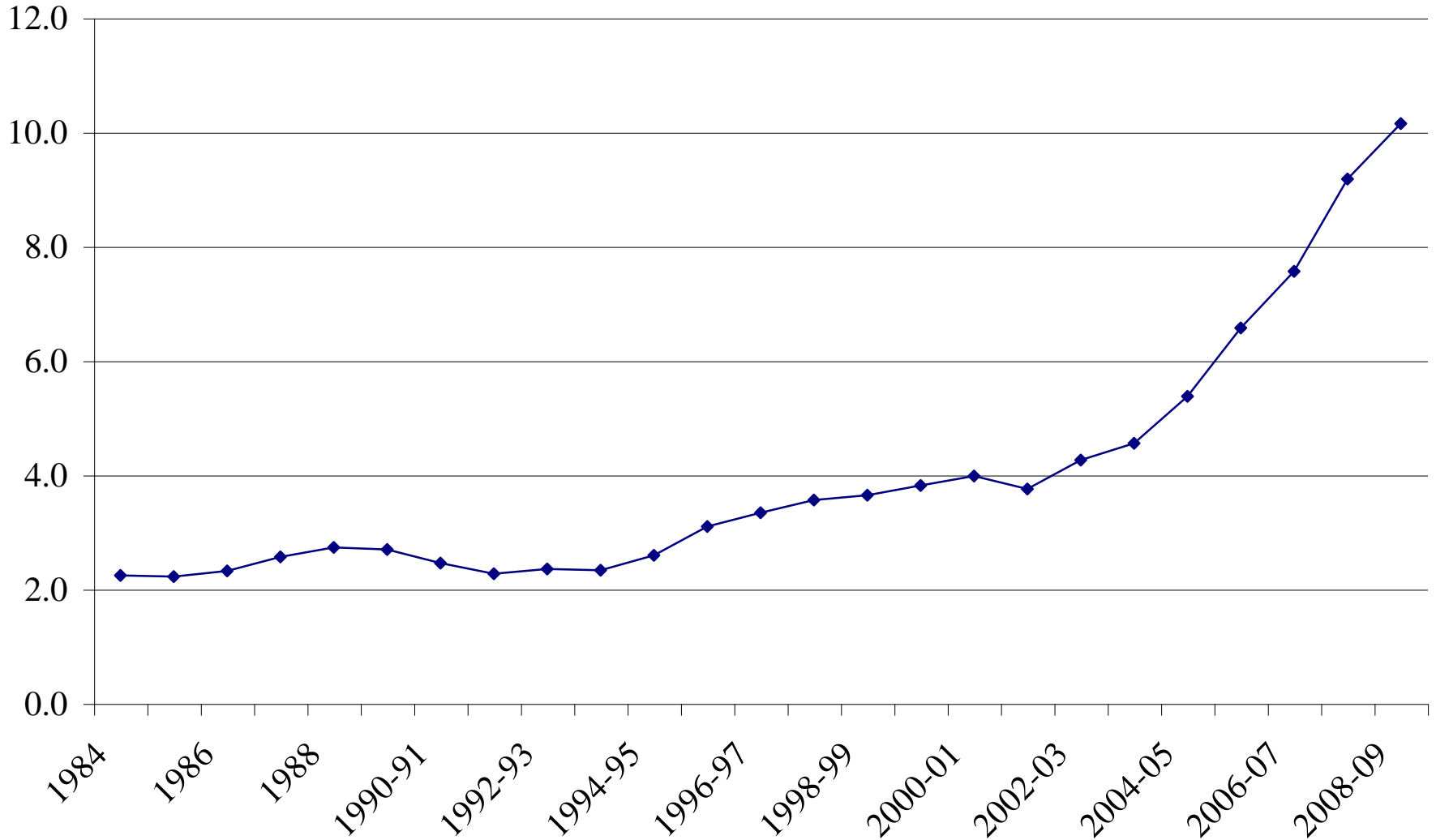
Cars in Million

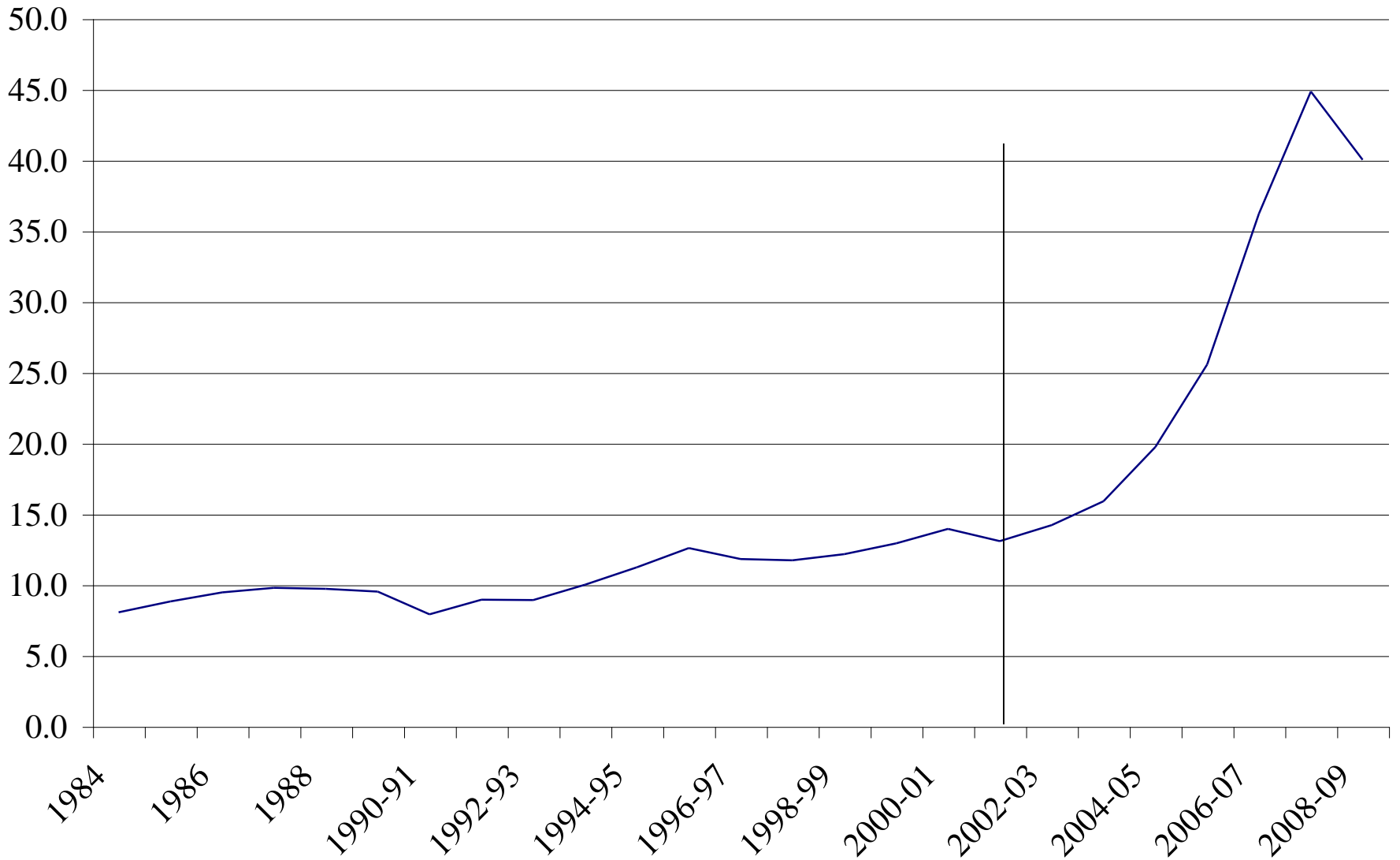


Two Wheelers in Million



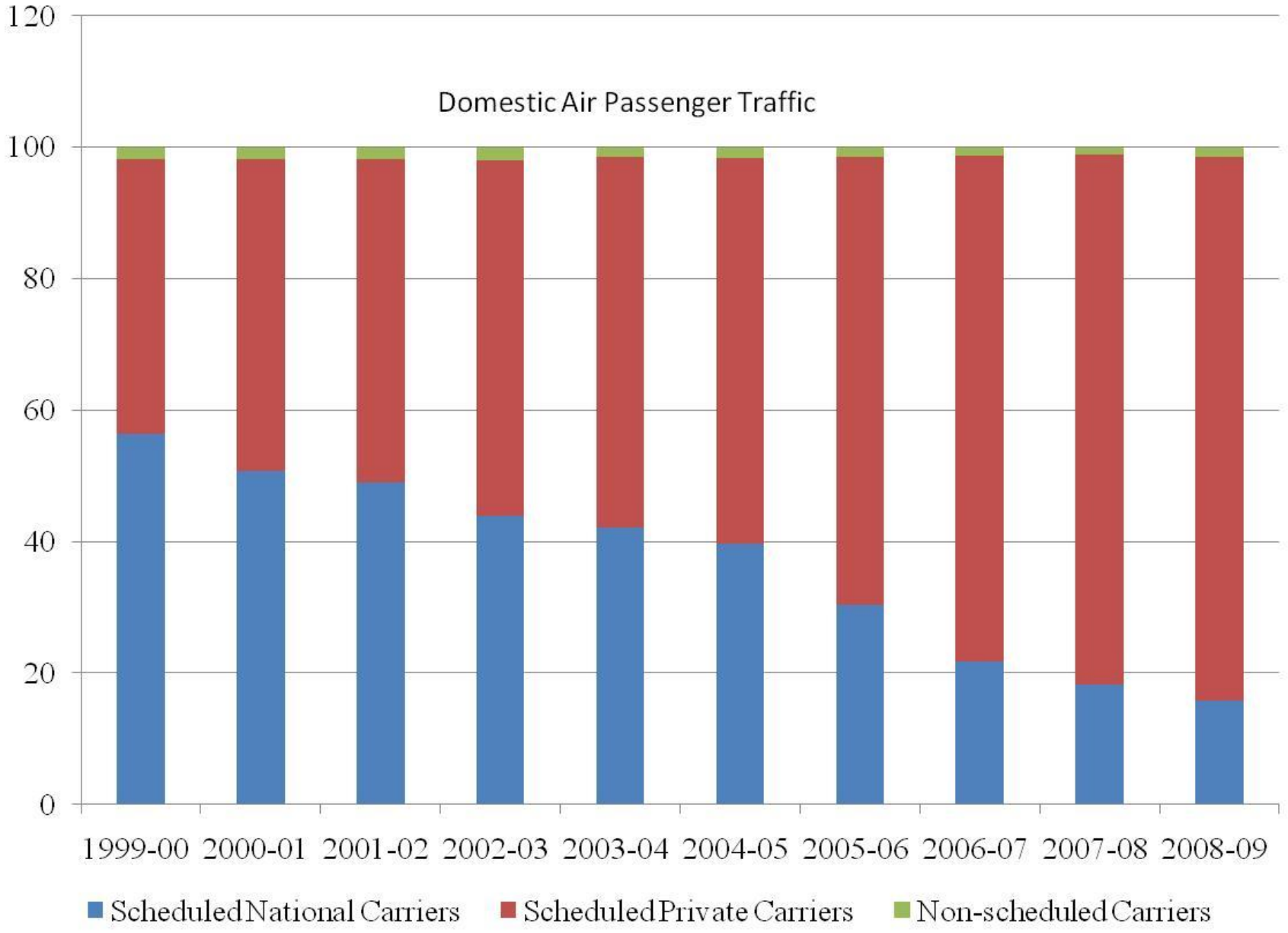
Total International Air Passengers in Millions

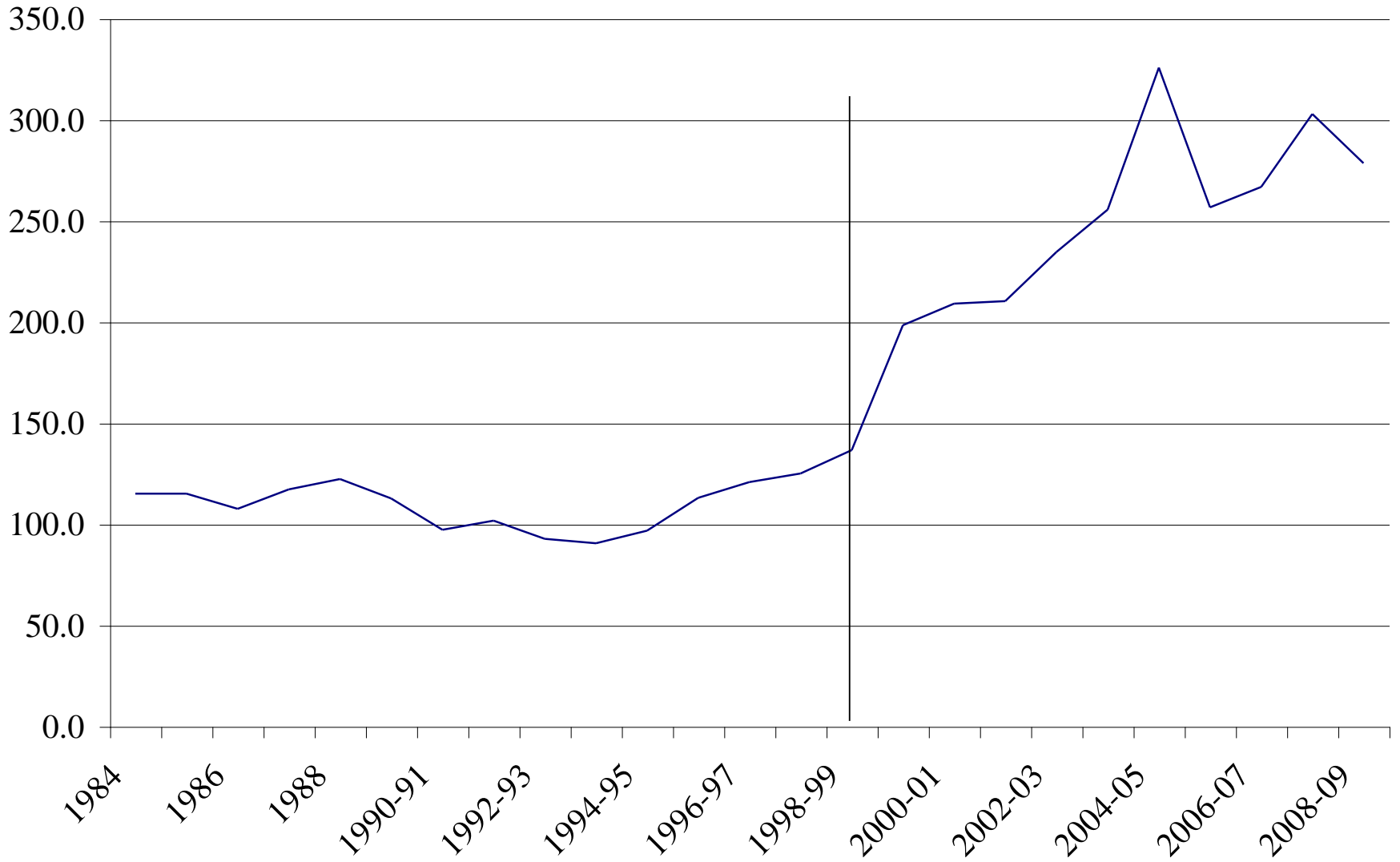




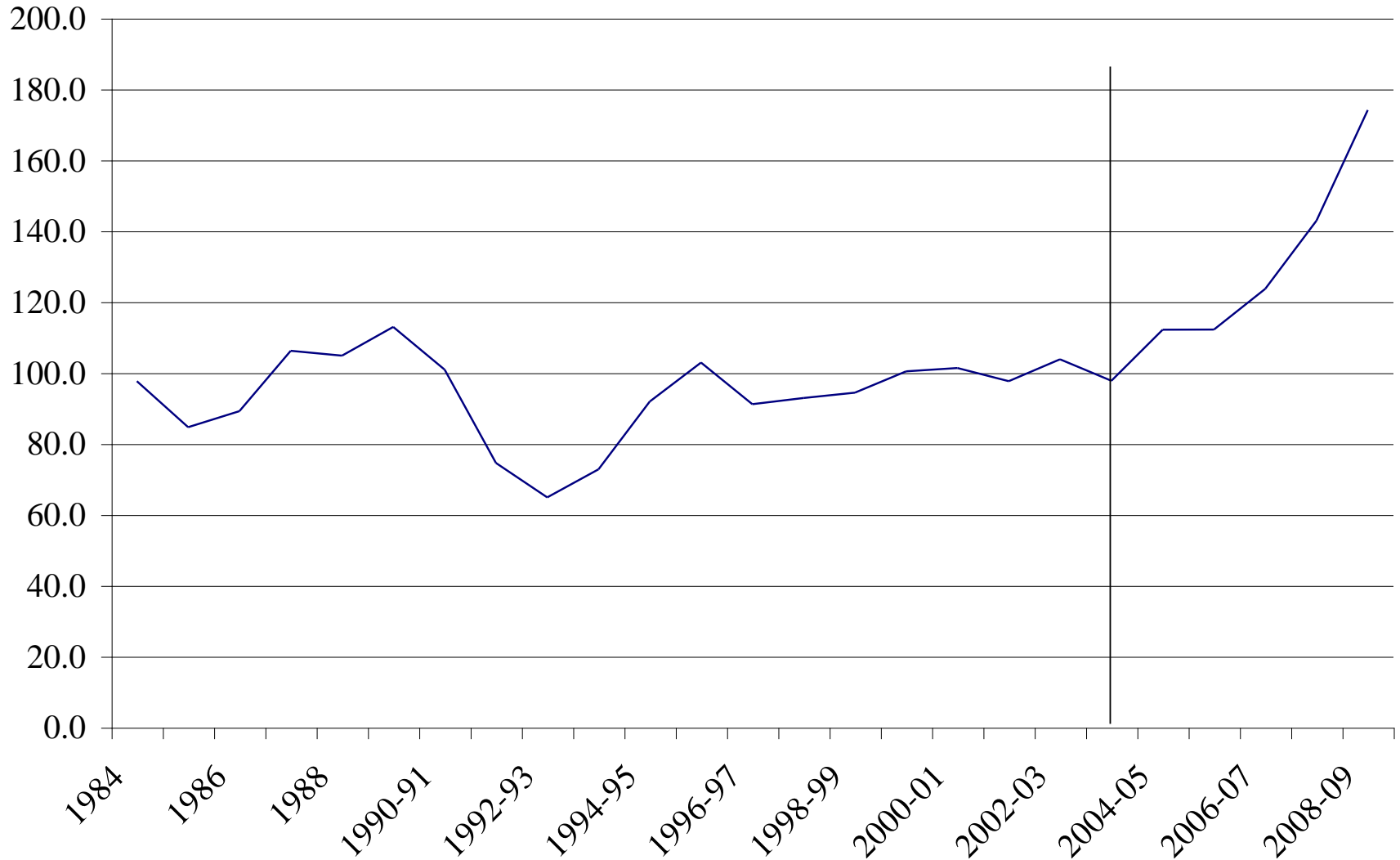
— Total Domestic Air Passengers in Million

Domestic Air Passenger Traffic

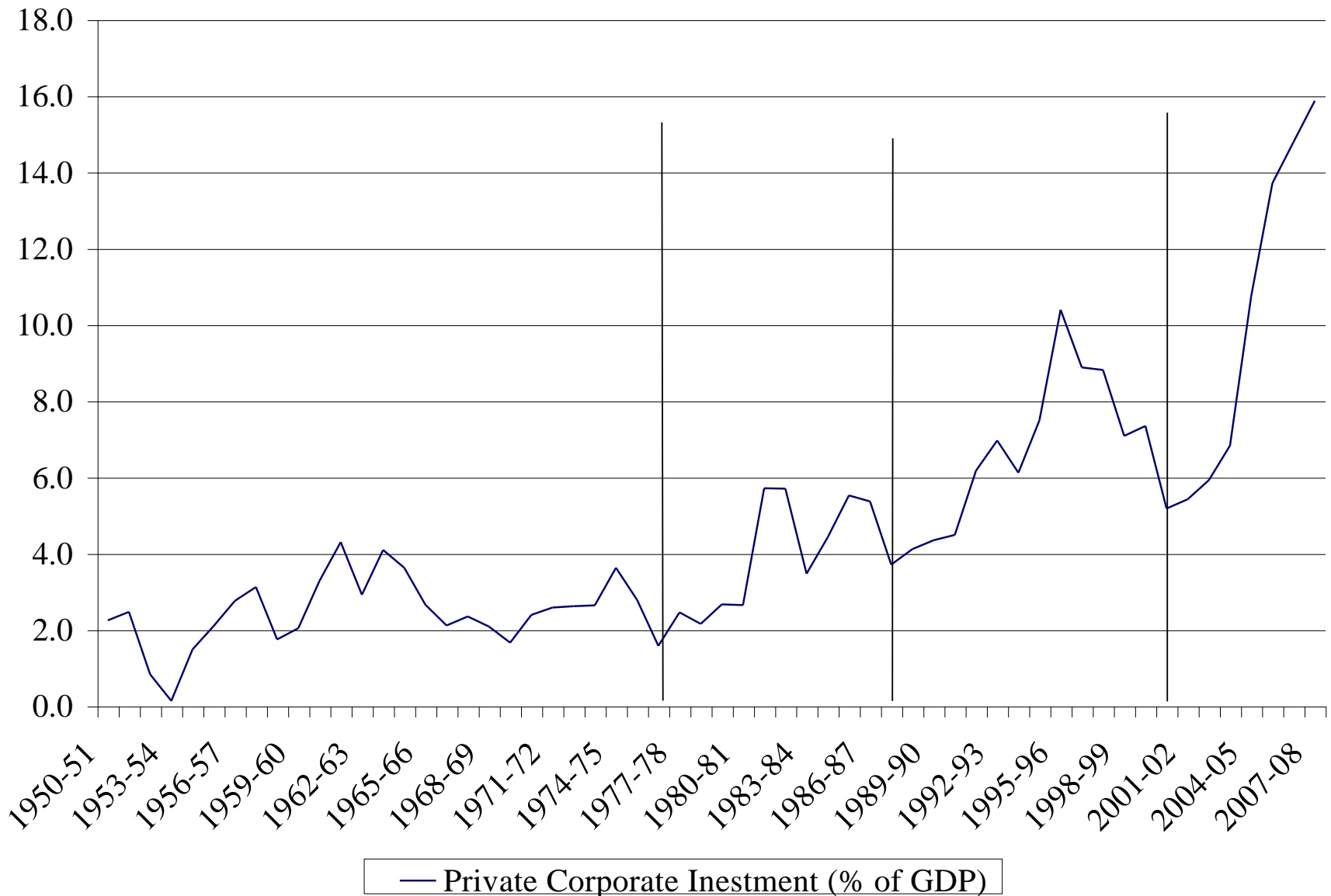




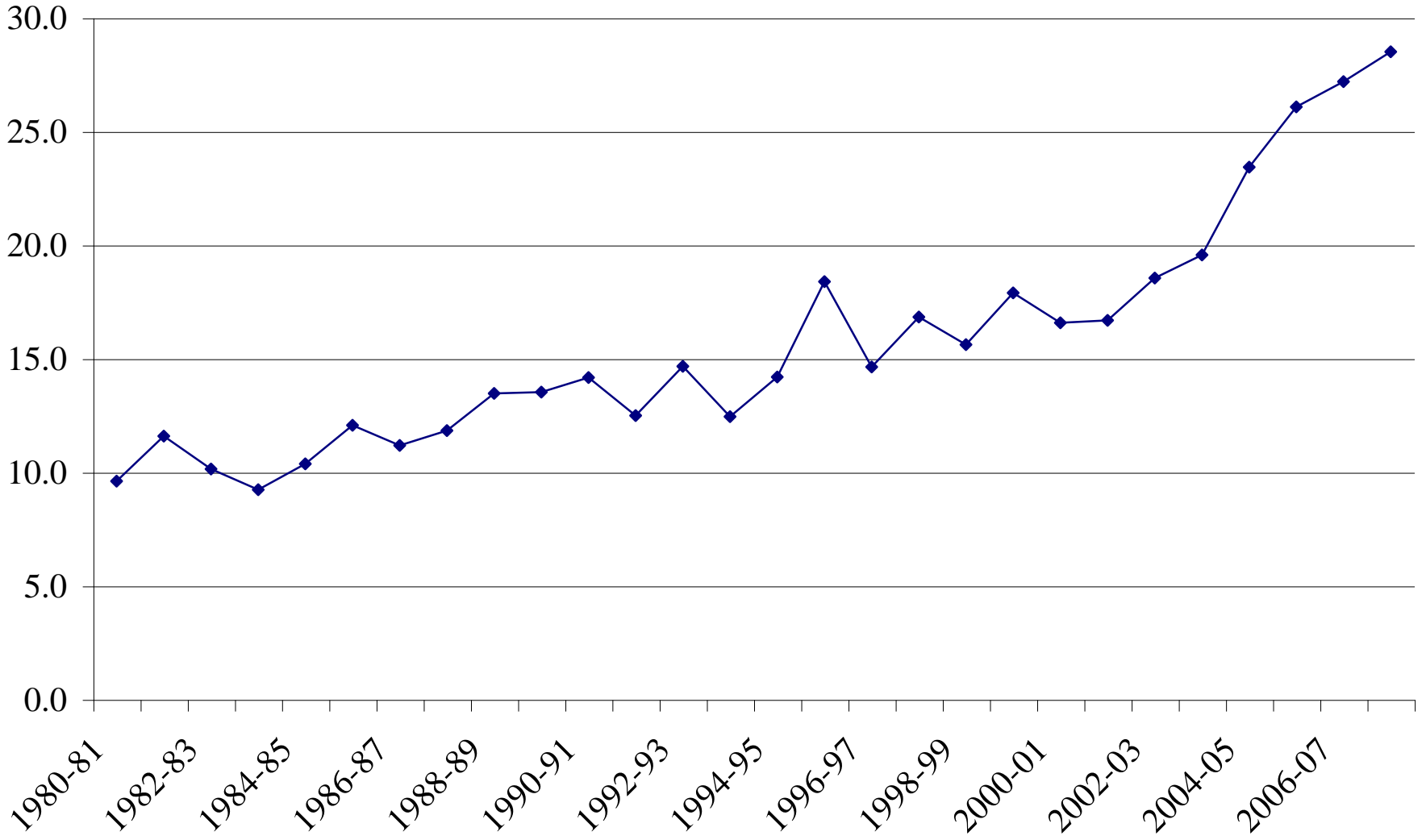
— Total Domestic Air Cargo in Thousand Tonnes

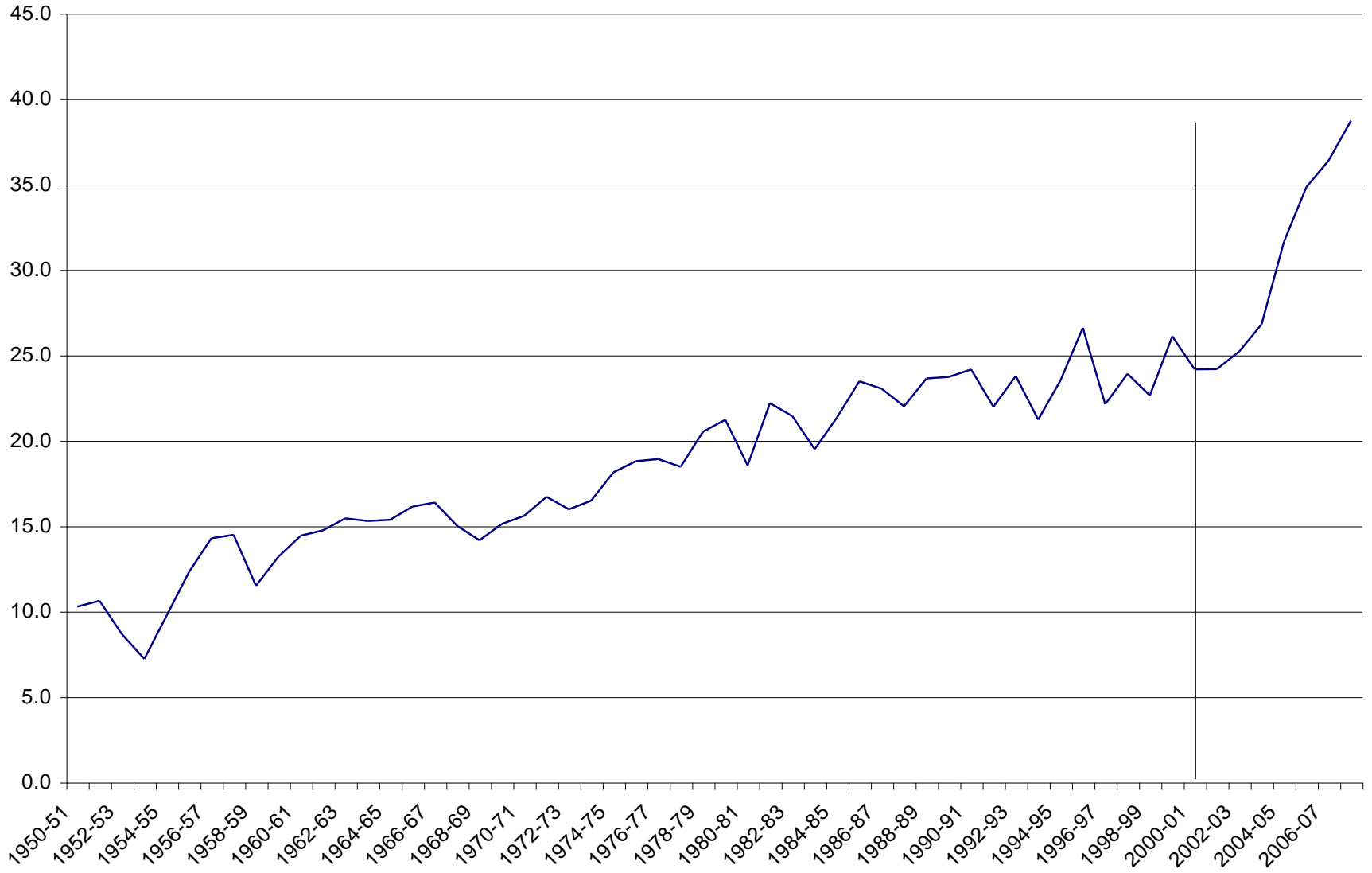


— Total International Air Cargo in Thousand Tonnes



Gross private investment as % of the GDI





Gross Capital Formation (% of GDP)

Exports and
Imports in
Billion U.S.
Dollars

Financial Year	Exports of Imports of Trade in						
	Merchandise Exports	Services Exports	Merchandise Imports	Services Imports	Goods & Services	Goods & Services	Goods & Services
1990-91	18.5	4.6	27.9	3.6	23.0	32.5	54.5
1991-92	18.3	5.0	21.1	3.8	23.3	26.1	48.2
1992-93	18.9	4.7	24.3	3.6	23.6	29.0	51.5
1993-94	22.7	5.3	26.7	4.7	27.9	32.0	59.4
1994-95	26.9	6.1	35.9	5.5	33.0	42.0	74.4
1995-96	32.3	7.3	43.7	7.5	39.7	51.0	90.9
1996-97	34.1	7.5	48.9	6.7	41.6	56.4	97.3
1997-98	35.7	9.4	51.2	8.1	45.1	60.6	104.4
1998-99	34.3	13.2	47.5	11.0	47.5	60.7	106.0
1999-00	37.5	15.7	55.4	11.6	53.3	71.1	120.3
2000-01	45.5	16.3	57.9	14.6	61.7	74.2	134.2
2001-02	44.7	17.1	56.3	13.8	61.8	73.4	131.9
2002-03	53.8	20.8	64.5	17.1	74.5	85.2	156.1
2003-04	66.3	26.9	80.0	16.7	93.2	106.9	189.9
2004-05	85.2	43.2	118.9	27.8	128.5	162.2	275.2
2005-06	105.2	57.7	157.1	34.5	162.8	214.7	354.4
2006-07	128.9	73.8	190.7	44.3	202.7	264.5	437.6
2007-08	166.2	90.1	257.8	52.5	256.2	347.9	566.5
2008-09	175.2	101.2*	294.6	51.4	276.4	395.8	622.4

Trade as
percent of
the GDP

Year	Financial Exports/GDP	Merchandise Exports/GDP	Services Exports/GDP	Merchandise Imports/GDP	Services Imports/GDP	Exports of Goods & Services/GDP	Imports of Goods & Services/GDP	Trade in Goods & Services/GDP
1990-91	5.8	1.4	8.8	1.1	7.3	9.9	17.2	
1991-92	6.9	1.9	7.9	1.4	8.8	9.4	18.1	
1992-93	7.3	1.8	9.4	1.4	9.1	10.7	19.8	
1993-94	8.2	1.9	9.7	1.7	10.1	11.4	21.5	
1994-95	8.3	1.9	11.1	1.7	10.2	12.8	23.0	
1995-96	9.1	2.1	12.3	2.1	11.1	14.4	25.5	
1996-97	8.8	1.9	12.6	1.7	10.7	14.3	25.1	
1997-98	8.7	2.3	12.5	2.0	11.0	14.4	25.4	
1998-99	8.2	3.2	11.4	2.6	11.4	14.1	25.5	
1999-00	8.3	3.5	12.3	2.6	11.8	14.9	26.7	
2000-01	9.9	3.5	12.6	3.2	13.4	15.8	29.2	
2001-02	9.4	3.6	11.8	2.9	12.9	14.7	27.6	
2002-03	10.6	4.1	12.7	3.4	14.7	16.1	30.8	
2003-04	11.1	4.5	13.3	2.8	15.5	16.1	31.7	
2004-05	12.2	6.2	17.0	4.0	18.3	20.9	39.3	
2005-06	13.0	7.1	19.4	4.3	20.1	23.6	43.7	
2006-07	14.1	8.1	20.9	4.9	22.2	25.7	47.9	
2007-08	14.1	7.7	21.9	4.5	21.8	26.4	48.2	
2008-09	15.0	8.6	25.2	4.4	23.6	29.6	53.2	

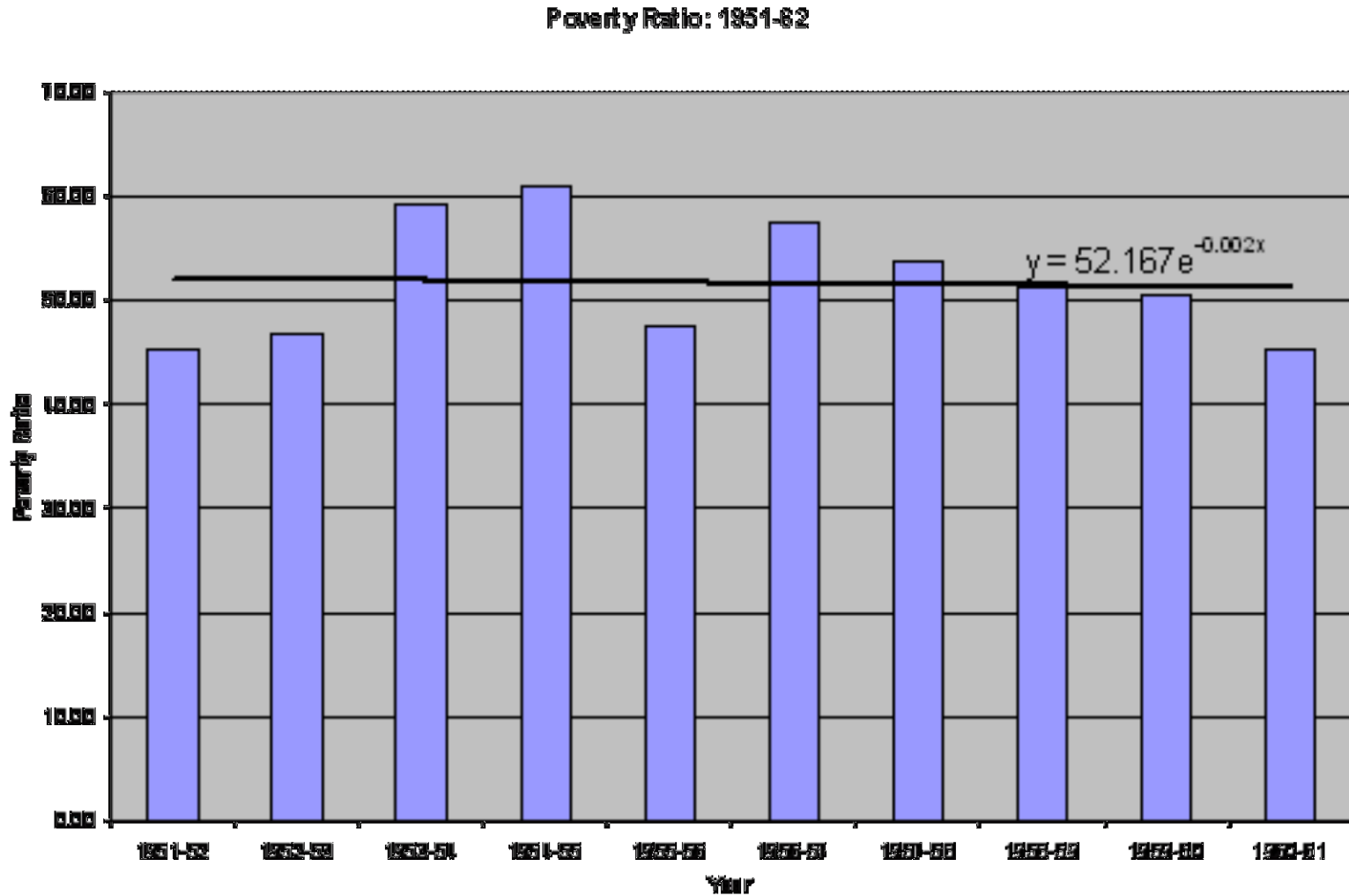
India and China: Exports of Goods and Services in Current Dollars (Billion)

	2002	2003	2004	2005	2006
India					
Service exports (BoP, current US\$)	19	24	38	56	75
Goods exports (BoP, current US\$)	51	61	78	102	124
China					
Service exports (BoP, current US\$)	40	47	62	74	92
Goods exports (BoP, current US\$)	326	438	593	762	970

India and China: Share of Services in Total Exports

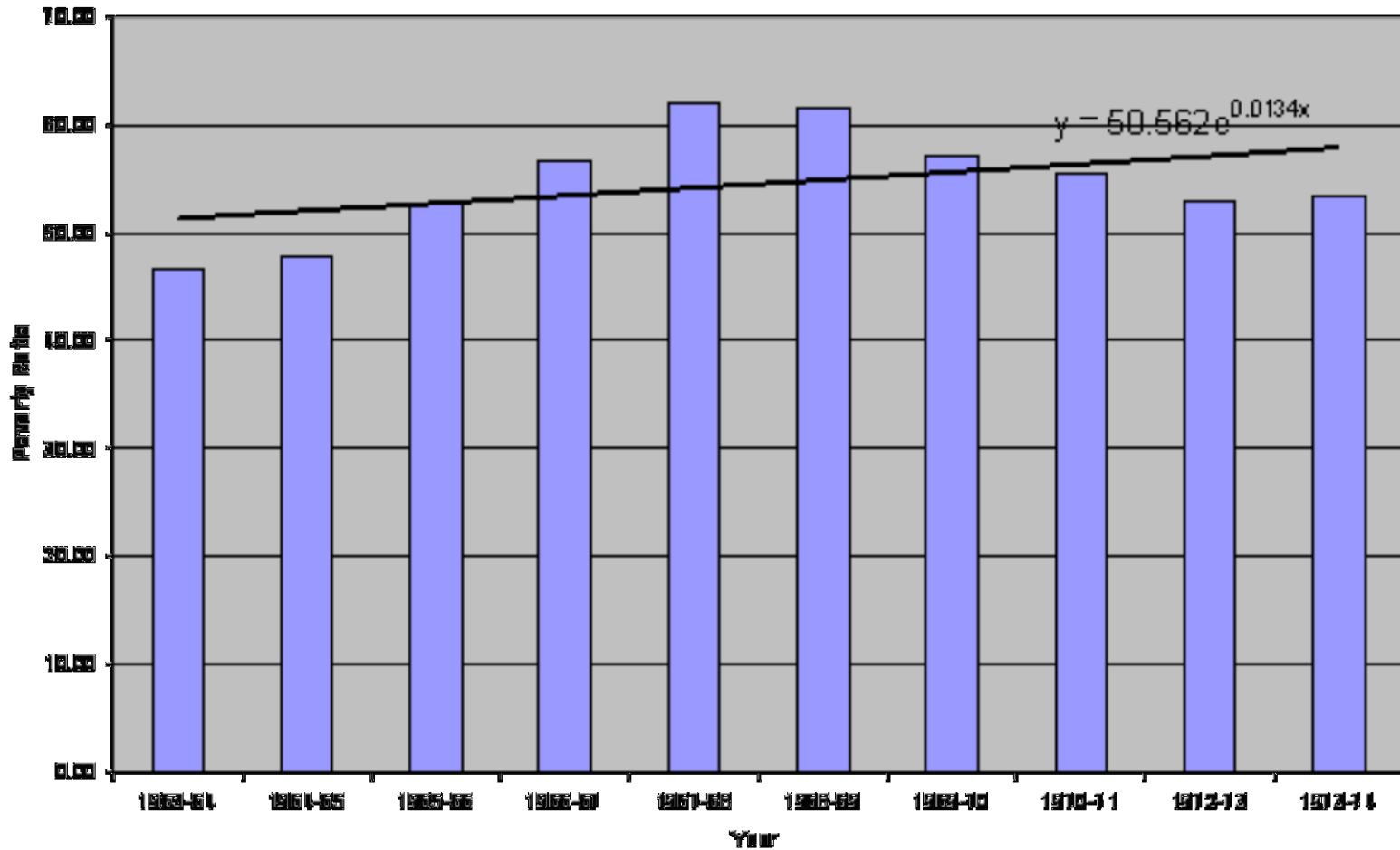
	2002	2003	2004	2005	2006
India					
Service exports (% Of Total)	28	28	33	35	38
China					
Service exports (% Of Total)	11	10	10	9	9

Poverty ratio: Phase I (1951-62)

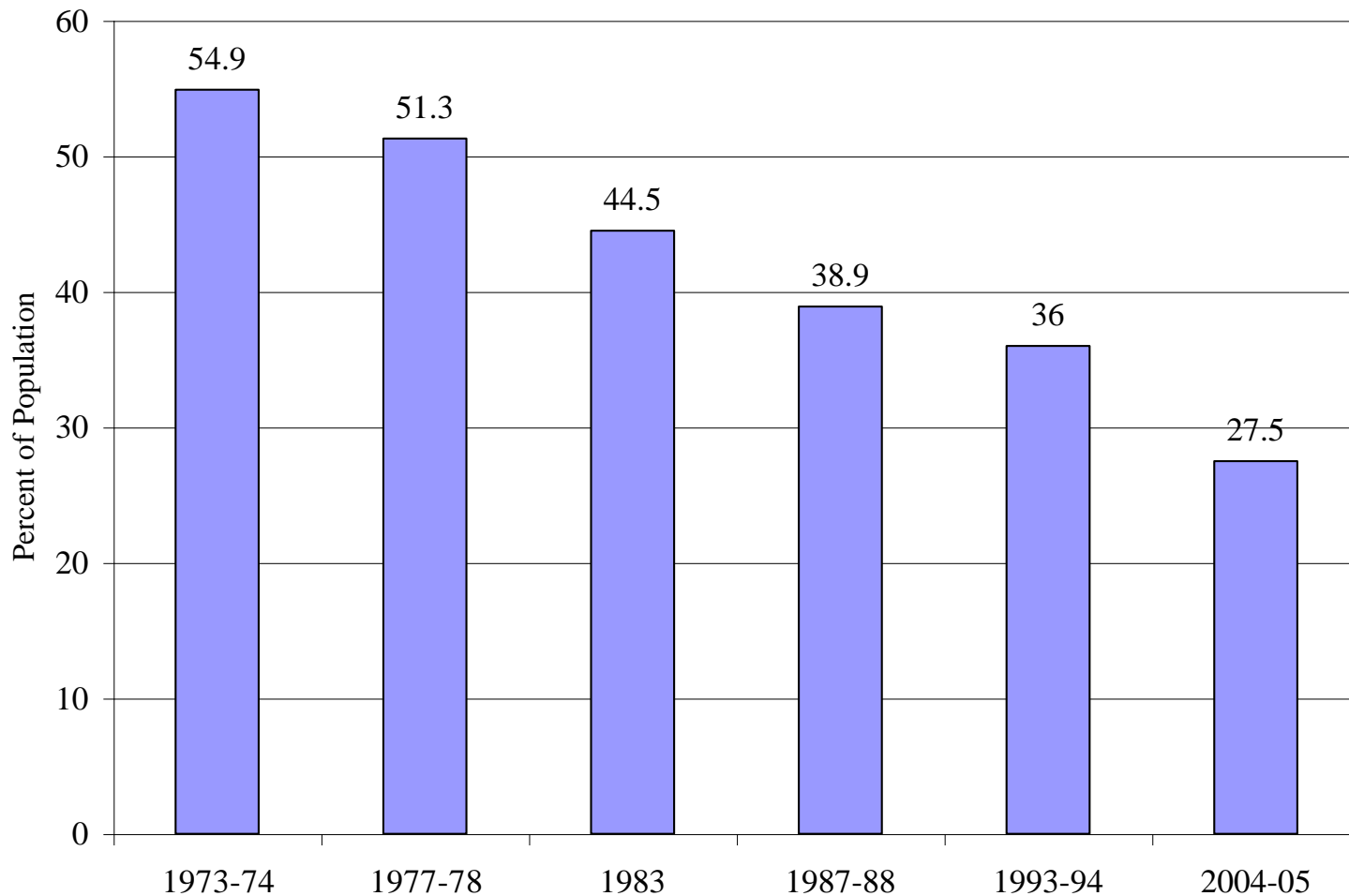


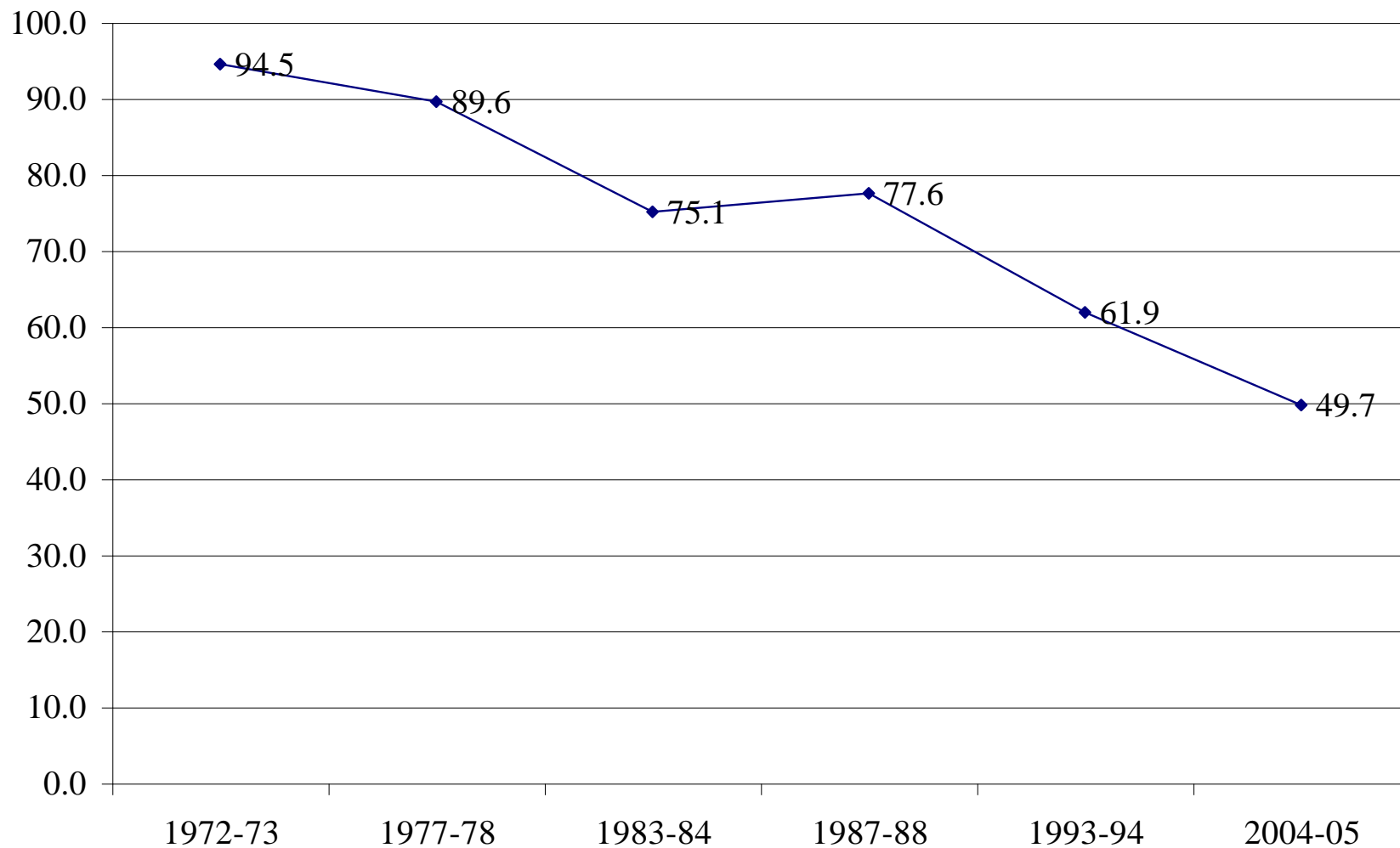
Poverty ratio: Phase II (1963-74)

Poverty Ratio: 1963-74



Poverty Ratio: Phases III-V (Official)





◆ Ratio of NSS/NAS Per-capita Expenditure

The Composition of the GDP

Year	Agriculture and Allied	Industry*	Manufactures	Services
1950-51	55.3	10.6	8.9	34.1
1964-65	46.8	15.1	12.5	38.1
1975-76	42.4	16.1	12.8	41.6
1980-81	37.9	17.4	13.8	44.6
1987-88	31.7	19.3	14.9	48.9
2002-03	21.4	19.9	15.2	58.7
2008-09	17.0	18.5	14.6	64.5

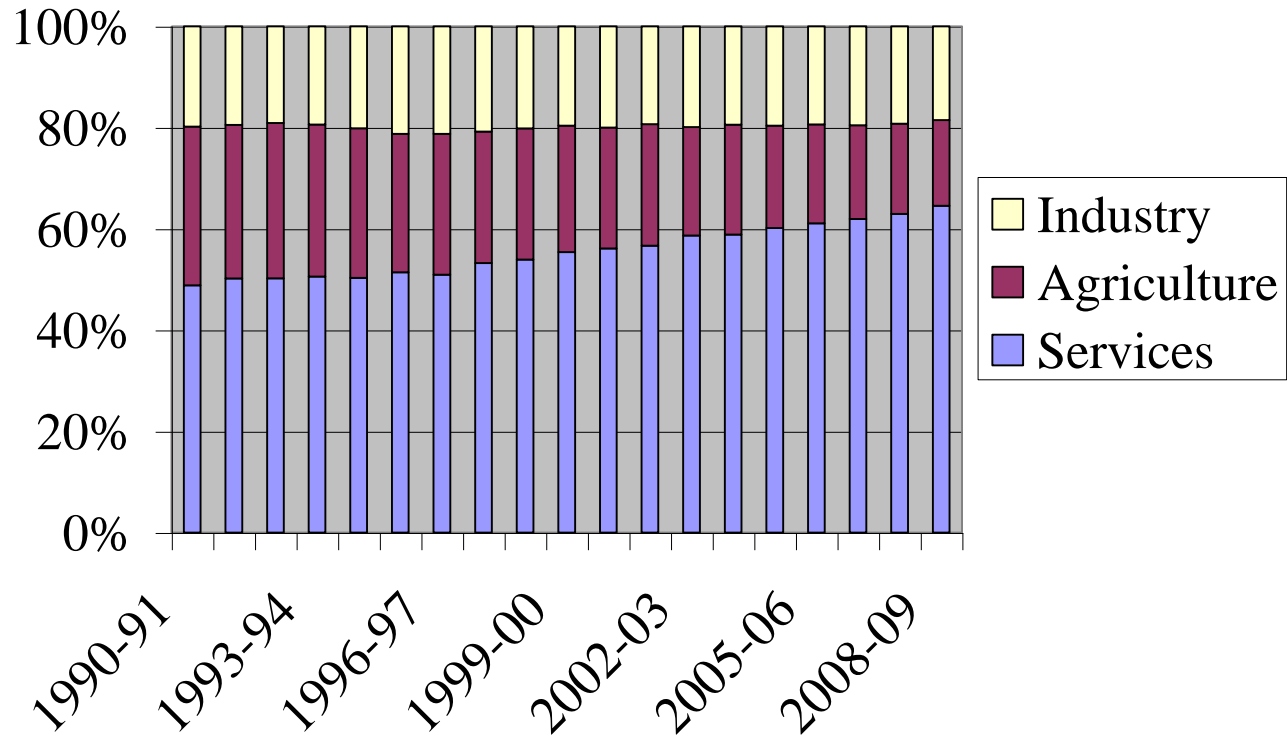
*Industry includes manufactures; mining and quarrying; and electricity, gas and water.

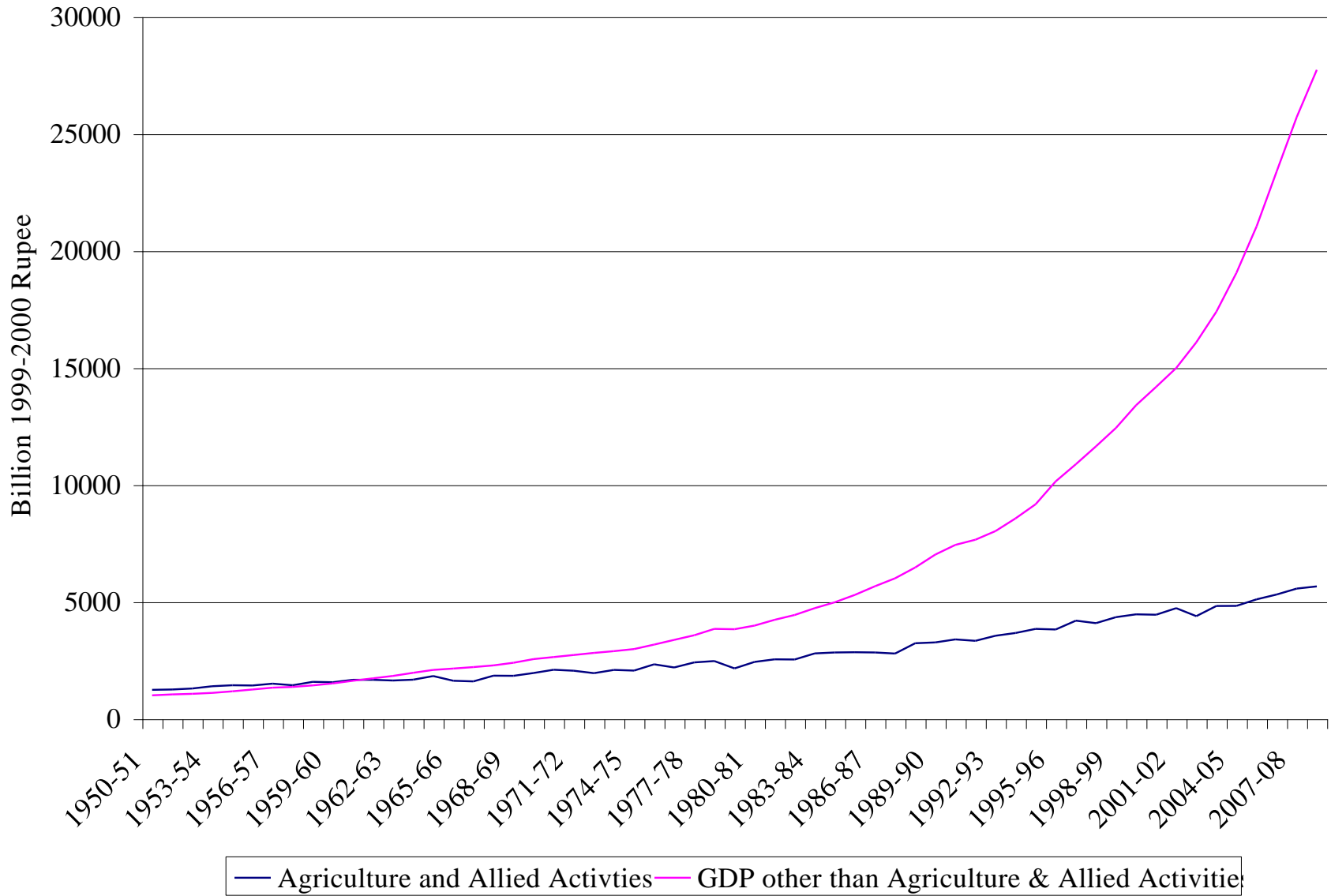
Note: Calculated using GDP at factor cost at constant 1999-2000 prices

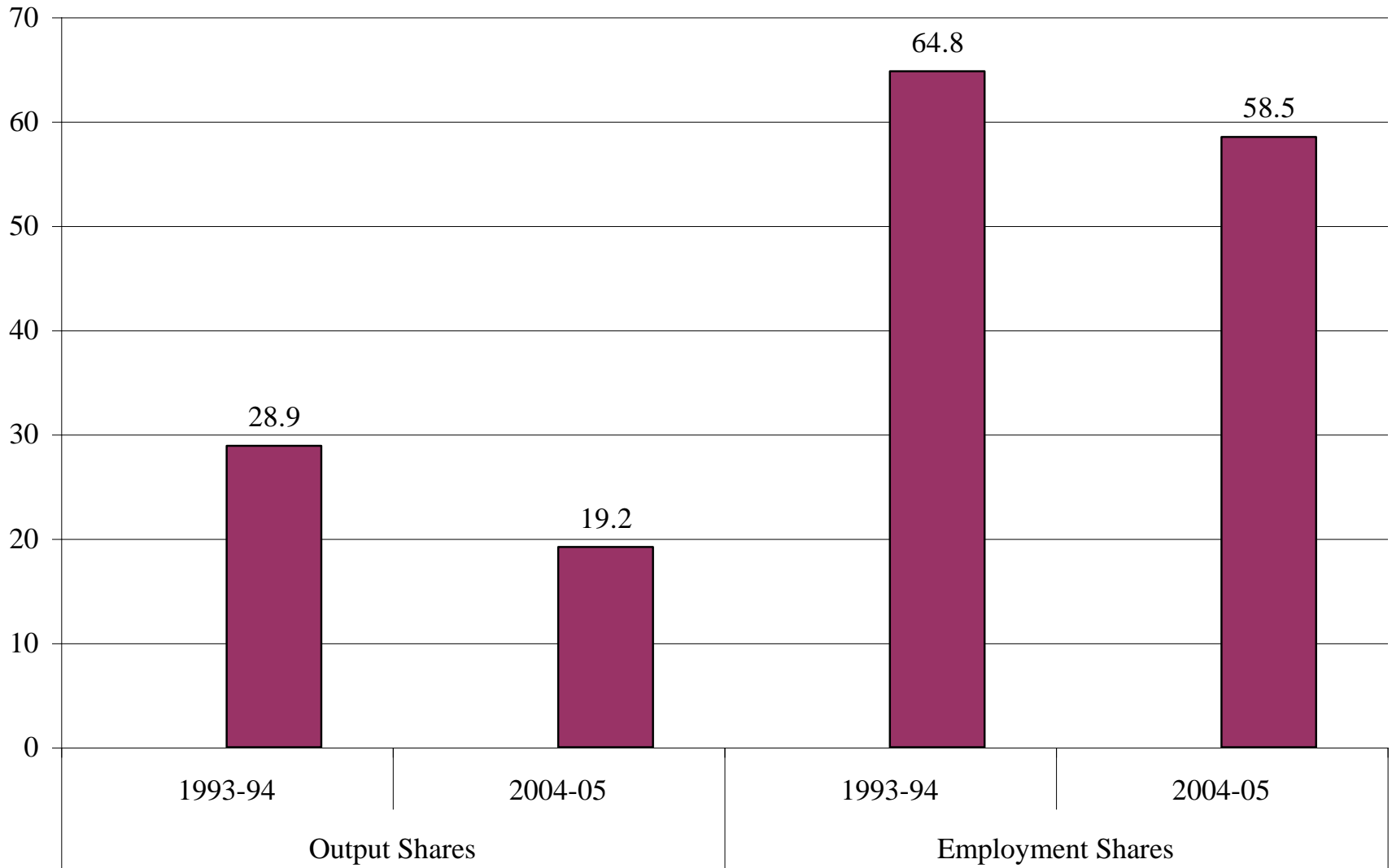
Rising Share of Services

Stagnant Share of Industry

Shares in the GDP







■ Agriculture and Allied Activities